

PLX12-400(12V100AH)

PLX SERIES-HIGH RATE

Applications

- UPS (High rate)
- High power backup supply
- Emergency power supply
- Starting system
- Power tools
- Emergency lighting
- Electrical starting

Key Features

- High-rate performance
- Low internal resistance
- Low self-discharging rate
- High energy density
- Fast charging acceptance
- Heat sealed plastic container
- Flame retardant to UL94-V0
- Up to 2 years shelf life @25°C (77°F)
- Design according with IEC 60896-21/22:2004

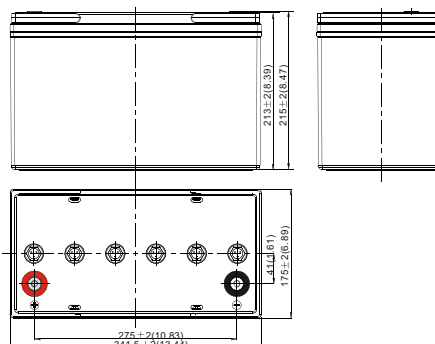
General Features

- Excellent high rate discharge capability for emergency backup power supply, particularly UPS.
- Outstanding high rate discharge performance and high rate charge capability with Thin Plate Pure Lead technology to provide high energy density.
- High quality AGM separators minimize electrical resistance to allow high current discharging properties.



Layout

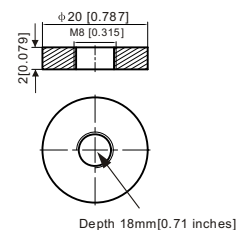
Unit: mm [inches]



Terminal

Terminal Model: T11

Unit: mm [inches]



PLX12-400(12V100AH) PLX SERIES-HIGH RATE

Specification

Nominal Voltage	12V	
Rated Capacity (Ah)	10hr 100Ah @25°C to 1.80V/cell	
Power (Watts)	15min 400Watts/cell @25°C to 1.67V/cell	
Dimension	Length	341.5±3mm (13.44 inches)
	Width	175±2mm (6.89 inches)
	Container Height	213±2mm (8.39 inches)
	Total Height (with Terminal)	215±2mm (8.46 inches)
Approx Weight	Approx 29.8Kg (65.7 lbs)	
Terminal	T11	
Container Material	ABS	
Max. Discharge Current	1250A (5s)	
Internal Resistance	Approx 3.5mΩ	
Operating Temp. Range	Discharge	-40~65°C (-40~149°F)
	Charge	0~40°C (32~104°F)
	Storage	-20~40°C (-4~104°F)
Capacity affected by Temperature	40°C (104°F)	103%
	25°C (77°F)	100%
	0°C (32°F)	86%
Self Discharge	PLX series batteries can be stored up to 24 months at 25°C(77°F) and then a freshening charge is required. For higher temperatures the time interval will be shorter.	



Constant Current Discharge (Amperes) at 25 °C (77°F)

F.V/Time	5min	10min	15min	20min	30min	45min	1h	2h	3h	4h	5h	8h	10h	20h
1.85V/cell	265.8	204.4	168.8	145.0	113.1	83.47	64.95	35.66	25.62	20.34	17.12	11.85	9.74	5.08
1.80V/cell	307.2	228.0	185.5	155.4	117.8	86.57	67.32	36.62	26.30	20.91	17.53	12.11	10.00	5.20
1.75V/cell	332.9	241.8	194.0	162.0	121.6	88.93	69.19	37.59	26.87	21.39	17.88	12.31	10.14	5.27
1.70V/cell	347.7	254.6	202.1	167.0	125.1	90.83	70.51	38.42	27.45	21.82	18.29	12.47	10.27	5.32
1.67V/cell	384.0	276.0	218.7	176.7	128.4	92.24	71.63	39.12	27.94	22.20	18.58	12.63	10.38	5.36
1.60V/cell	418.8	296.4	227.2	182.7	132.0	94.01	72.88	39.88	28.47	22.57	18.87	12.78	10.48	5.39

Constant Power Discharge (Watts/cell) at 25 °C (77°F)

F.V/Time	5min	10min	15min	20min	30min	45min	1h	2h	3h	4h	5h	8h	10h	20h
1.85V/cell	499.4	387.7	323.0	278.9	220.2	164.9	128.8	71.27	51.40	40.91	34.53	24.01	19.81	10.37
1.80V/cell	567.1	425.7	350.1	296.0	227.8	170.1	132.8	72.83	52.57	41.93	35.24	24.46	20.26	10.58
1.75V/cell	605.5	446.8	362.7	306.1	233.3	173.5	135.6	74.38	53.43	42.70	35.82	24.78	20.49	10.70
1.70V/cell	623.4	463.4	373.4	312.4	238.1	176.1	137.5	75.64	54.34	43.42	36.53	25.05	20.69	10.77
1.67V/cell	678.9	497.4	400.0	328.0	243.2	178.1	139.0	76.74	55.12	44.05	37.01	25.32	20.86	10.85
1.60V/cell	719.1	519.9	406.8	333.4	246.9	179.5	140.2	77.60	55.76	44.55	37.39	25.51	21.00	10.89

China sales office:

Add: 5th Floor, Xinbaohui Bldg., Nanhai Blvd.,
Nanshan, Shenzhen, China. 518052
Tel: +86-755-86036060 (100 lines)
Fax: +86-755-26067269
E-mail: export@leoch.com
Http://www.leoch.com

HongKong sales office:

Add: 3910 Cable TV Tower, 9 Hoi Shing
Road, Tsuen Wan, N.T. Hong Kong.
Tel: +852 35786666
Fax: +852 21170016
E-mail: sales.hk@leoch.com

Singapore sales office:

Add: No.53, Ubi Avenue 1, #03-21 Paya
Ubi Industrial Park, Singapore 408934
Tel: +65 68416629
Fax: +65 68443210
Email: sales.sg@leoch.com

North America sales office:

Add: 19751 Descartes, Unit A,
Foothill Ranch, CA 92610, USA
Tel: 949-588-5853
Fax: 949-588-5966
E-mail: sales@leoch.us
Http://www.leoch.com

Europe sales office:

Add: 9B Wheatstone Park, Waterwells
Business Park, Gloucester, GL2 2AQ, UK.
Tel: +44(0) 1452 729428
Fax: +44 (0)1452-690125
E-mail: Sales.Europe@leoch.com