

Specification

Nominal Voltage	12V	
Watts(15min Rate)	237.7 Watte at 1.67V/cell	
Dimension	Length	259±3mm (10.2 inches)
	Width	168±2mm (6.61 inches)
	Container Height	208±3mm (8.19 inches)
	Total Height (with Terminal)	214±3mm (8.43 inches)
Approx Weight	Approx 22.3 kg (49.2lbs)	
Terminal	T6/T9	
Container Material	ABS	
Rated Capacity	74.4 AH/7.44A	(10hr , 1.80V/cell,25°C/77°F)
	72.0 AH/9.00A	(8hr, 1.80V/cell,25°C/77°F)
	65.5 AH/13.1A	(5hr, 1.75V/cell,25°C/77°F)
	56.7 AH/18.9A	(3hr, 1.75V/cell,25°C/77°F)
	46.2 AH/46.2A	(1hr, 1.60V/cell,25°C/77°F)
Max. Discharge Current	864A (5s)	
Internal Resistance	Approx 6.6mΩ	
Operating Temp.Range	Discharge	-15~50°C (5~122°F)
	Charge	0~40°C (32~104°F)
	Storage	-15~40°C (5~104°F)
Nominal Operating Temp. Range	25±3°C (77±5°F)	
Cycle Use	Initial Charging Current less than 21.6A.Voltage	
	14.4V~15.0V at 25°C(77°F)Temp. Coefficient -30mV/°C	
Standby Use	No limit on Initial Charging Current Voltage	
	13.5V~13.8V at 25°C(77°F)Temp. Coefficient -20mV/°C	
Capacity affected by Temperature	40°C (104°F)	103%
	25°C (77°F)	100%
	0°C (32°F)	86%
Self Discharge	Leoch LPX series batteries may be stored for up to 6 months at 25°C(77°F) and then a freshening charge is required. For higher temperatures the time interval will be shorter.	



Applications

- ◆ UPS (High rate)
- ◆ High power backup supply
- ◆ Emergency power supply
- ◆ Starting system
- ◆ Power tools
- ◆ Emergency lighting
- ◆ Electric starting



Constant Current Discharge (Amperes) at 25 °C (77°F)

F.V/Time	5min	10min	15min	20min	30min	45min	1h	2h	3h	4h	5h	6h	8h	10h	20h
1.85V/cell	123.9	105.8	89.6	76.5	59.1	44.8	36.3	22.9	17.5	14.3	12.2	10.7	8.6	7.18	3.81
1.80V/cell	162.7	129.0	104.4	87.0	65.2	48.4	39.4	24.2	18.3	15.0	12.8	11.2	8.9	7.44	3.87
1.75V/cell	181.3	140.2	113.3	93.1	69.2	51.1	41.1	25.1	18.9	15.4	13.1	11.4	9.1	7.51	3.94
1.70V/cell	196.9	150.0	120.7	98.1	72.9	53.6	42.7	25.8	19.3	15.8	13.3	11.6	9.2	7.59	3.97
1.67V/cell	217.6	163.4	129.2	104.8	76.4	55.7	44.2	26.5	19.9	16.1	13.6	11.8	9.3	7.69	4.01
1.60V/cell	229.4	172.3	136.0	109.4	79.5	57.8	46.2	27.3	20.5	16.5	13.9	12.0	9.4	7.77	4.05

Constant Power Discharge (Watts/cell) at 25 °C (77°F)

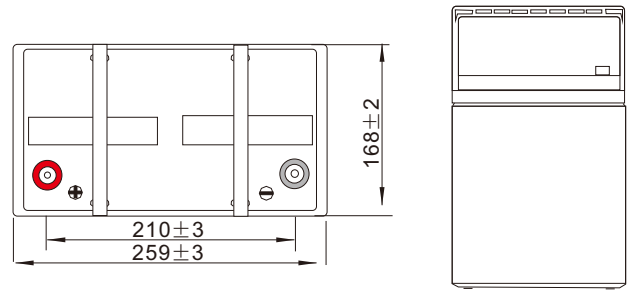
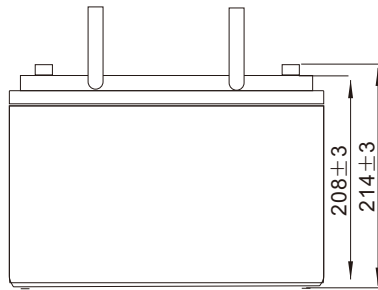
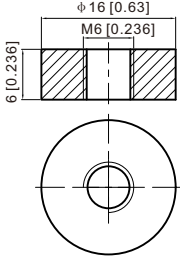
F.V/Time	5min	10min	15min	20min	30min	45min	1h	2h	3h	4h	5h	6h	8h	10h	20h
1.85V/cell	232.4	200.5	171.4	147.4	114.7	87.5	71.2	45.1	34.5	28.4	24.4	21.3	17.3	14.4	7.66
1.80V/cell	302.5	242.7	198.4	166.7	125.9	94.1	77.0	47.5	36.1	29.7	25.4	22.2	17.8	14.9	7.75
1.75V/cell	333.9	261.7	214.0	177.6	133.1	99.0	80.1	49.1	37.2	30.4	25.9	22.6	18.1	15.0	7.85
1.70V/cell	357.4	276.3	225.3	185.3	139.0	102.9	82.5	50.1	37.7	30.8	26.1	22.8	18.2	15.0	7.86
1.67V/cell	388.6	296.4	237.7	195.4	144.1	106.0	84.6	51.1	38.5	31.3	26.4	23.0	18.3	15.1	7.88
1.60V/cell	400.0	305.9	245.3	199.9	147.0	108.1	87.1	51.9	39.1	31.6	26.6	23.2	18.2	15.0	7.85

Specifications subject to change without notice.

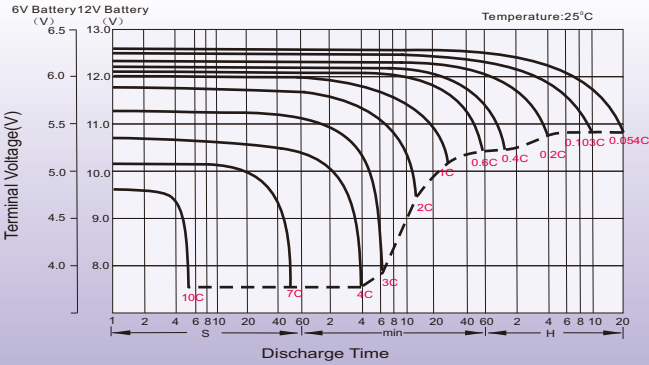
Dimensions

T6 Terminal

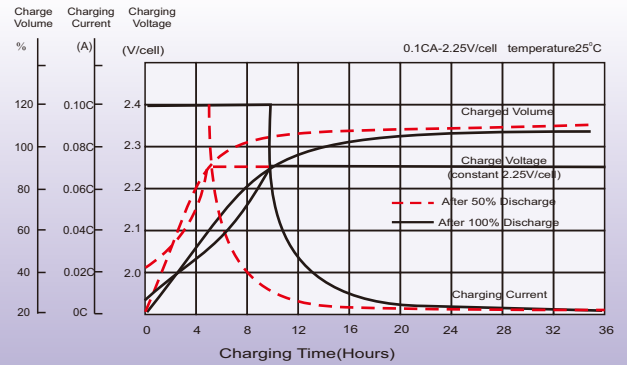
Unit: mm [inches]



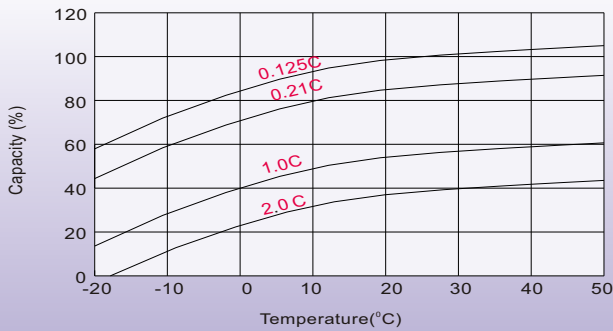
Discharge Characteristics



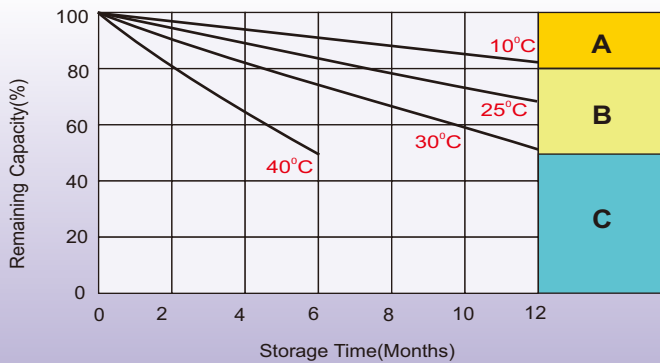
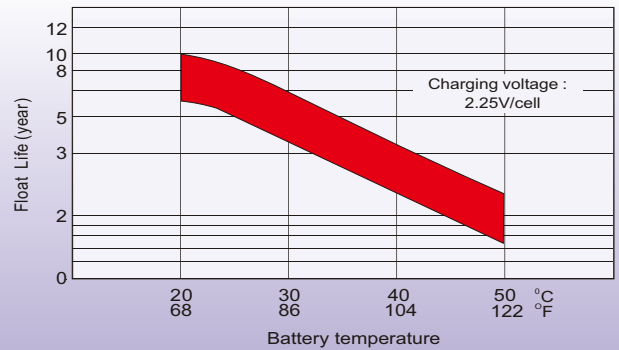
Float Charging Characteristics



Temperature Effects in Relation to Battery Capacity



Effect of Temperature on Long Term Float Life



Self Discharge Characteristics

- A** No supplementary charge required
(Carry out supplementary charge before use if 100% capacity is required.)
- B** Supplementary charge required before use. Optional charging way as below:
 1. Charged for above 3 days at limited current 0.25CA and constant voltage 2.25V/cell.
 2. Charged for above 20 hours at limited current 0.25CA and constant voltage 2.45V/cell.
 3. Charged for 8-10 hours at limited current 0.05CA.
- C** Supplementary charge may often fail to recover the capacity.
The battery should never be left standing till this is reached.

Sales Office

China sales office:

Add: 5th Floor, Xinbaohui Bldg., Nanhai Blvd.,
Nanshan, Shenzhen, China. 518052
Tel: +86-755-86036060 (100 lines)
Fax: +86-755-26067269
E-mail: export@leoch.com
Http://www.leoch.com

HongKong sales office:

Workshop C, 33/F, TML Tower,
No. 3 Hoi Shing Road, Tsuen Wan,
New Territories, Hong Kong
Tel: +852 35786666
Fax: +852 21170016
E-mail: sales.hk@leoch.com

Singapore sales office:

Add: No. 1 Tech Park Crescent,
Singapore 638131
Tel: +65 68636078
Fax: +65 68636079
Email sales.sg@leoch.com
Http://www.leoch.com

North America sales office:

Add: 19751 Descartes, Unit A,
Foothill Ranch, CA 92610, USA
Tel: 949-588-5853
Fax: 949-588-5966
E-mail: sales@leoch.us
Http://www.leoch.us

Europe sales office:

Add: 9B Wheatstone Court. Waterwells
Business Park, Gloucester, GL2-2AQ,
UK United Kingdom
Tel: +44(0) 1452 729428 / 1452 729696
Fax: +44 (0)1452-690125
E-mail: Sales.Europe@leoch.com