

Specification

Nominal Voltage	12V	
Watts(15min Rate)	221.2 Watte at 1.67V/cell	
Dimension	Length	348±3mm (13.7 inches)
	Width	167±2mm (6.57 inches)
	Container Height	178±2mm (7.01 inches)
	Total Height (with Terminal)	178±2mm (7.01 inches)
Approx Weight	Approx 21.2 kg (46.7lbs)	
Terminal	T6	
Container Material	ABS	
Rated Capacity	67.4 AH/6.74A	(10hr , 1.80V/cell,25°C/77°F)
	65.0 AH/8.13A	(8hr, 1.80V/cell,25°C/77°F)
	55.5 AH/11.1A	(5hr, 1.75V/cell,25°C/77°F)
	49.8 AH/16.6A	(3hr, 1.75V/cell,25°C/77°F)
	41.8 AH/41.8A	(1hr, 1.60V/cell,25°C/77°F)
Max. Discharge Current	780A (5s)	
Internal Resistance	Approx 7.3mΩ	
Operating Temp.Range	Discharge	-15~50°C (5~122°F)
	Charge	0~40°C (32~104°F)
	Storage	-15~40°C (5~104°F)
Nominal Operating Temp. Range	25±3°C (77±5°F)	
Cycle Use	Initial Charging Current less than19.5A.Voltage	
	14.4V~15.0V at 25°C(77°F)Temp. Coefficient -30mV/°C	
Standby Use	No limit on Initial Charging Current Voltage	
	13.5V~13.8V at 25°C(77°F)Temp. Coefficient -20mV/°C	
Capacity affected by Temperature	40°C (104°F)	103%
	25°C (77°F)	100%
	0°C (32°F)	86%
Self Discharge	Leoch LPX series batteries may be stored for up to 6 months at 25°C(77°F) and then a freshening charge is required. For higher temperatures the time interval will be shorter.	



Applications

- ◆ UPS (High rate)
- ◆ High power backup supply
- ◆ Emergency power supply
- ◆ Starting system
- ◆ Power tools
- ◆ Emergency lighting
- ◆ Electric starting



Constant Current Discharge (Amperes) at 25 °C (77°F)

F.V/Time	5min	10min	15min	20min	30min	45min	1h	2h	3h	4h	5h	6h	8h	10h	20h
1.85V/cell	141.6	105.7	90.0	76.6	57.5	42.7	34.6	20.9	15.6	12.5	10.5	9.10	7.70	6.40	3.43
1.80V/cell	175.5	125.2	101.9	84.2	62.0	45.5	36.7	21.9	16.1	12.9	10.8	9.46	8.13	6.74	3.54
1.75V/cell	195.8	136.1	108.7	88.7	65.0	47.6	38.3	22.6	16.6	13.3	11.1	9.7	8.26	6.83	3.60
1.70V/cell	211.4	146.6	114.9	92.8	67.1	49.4	39.5	23.2	17.0	13.6	11.3	9.9	8.39	6.90	3.65
1.67V/cell	226.2	153.7	119.6	96.3	69.4	51.0	40.7	24.0	17.4	13.9	11.6	10.2	8.48	6.98	3.68
1.60V/cell	240.2	161.9	124.0	99.5	71.8	52.3	41.8	24.5	17.8	14.2	11.8	10.4	8.56	7.05	3.71

Constant Power Discharge (Watts/cell) at 25 °C (77°F)

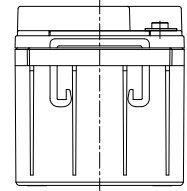
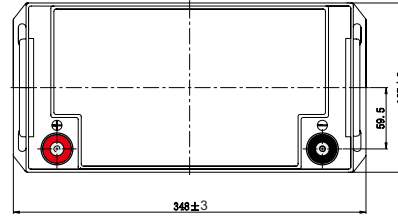
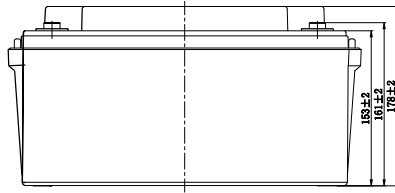
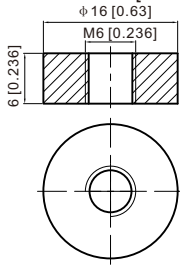
F.V/Time	5min	10min	15min	20min	30min	45min	1h	2h	3h	4h	5h	6h	8h	10h	20h
1.85V/cell	262.9	198.5	170.7	146.6	110.6	82.8	67.6	41.0	30.8	24.9	20.9	18.2	15.5	12.9	6.91
1.80V/cell	322.9	233.3	192.2	160.4	119.0	87.9	71.4	42.8	31.8	25.5	21.5	18.9	16.3	13.5	7.12
1.75V/cell	356.3	251.8	203.8	168.1	124.2	91.6	74.2	44.2	32.6	26.2	21.9	19.3	16.5	13.7	7.21
1.70V/cell	380.5	268.7	214.2	174.9	127.6	94.8	76.3	45.2	33.3	26.7	22.4	19.7	16.7	13.8	7.29
1.67V/cell	402.6	279.1	221.2	180.4	131.3	97.3	78.3	46.5	34.1	27.3	22.9	20.1	16.8	13.9	7.33
1.60V/cell	420.4	290.3	227.0	184.8	134.9	99.5	80.2	47.4	34.7	27.7	23.3	20.5	16.9	14.0	7.38

Specifications subject to change without notice.

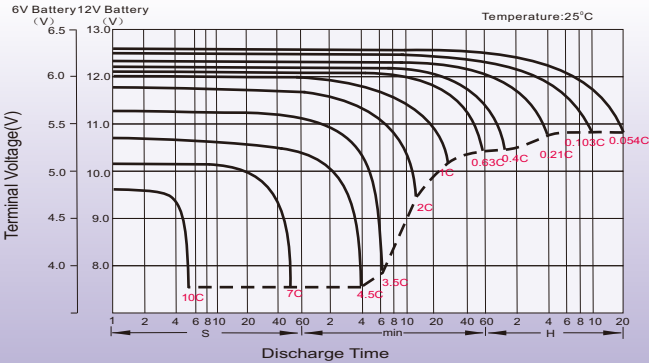
Dimensions

T6 Terminal

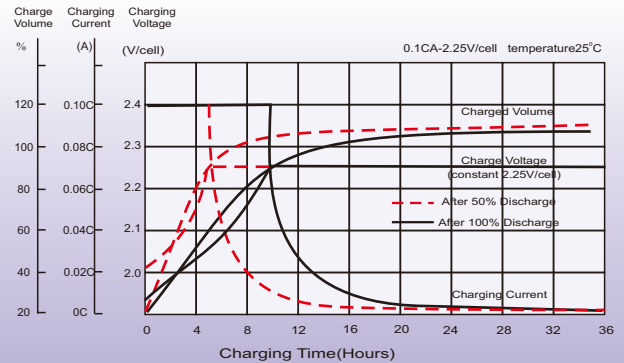
Unit: mm [inches]



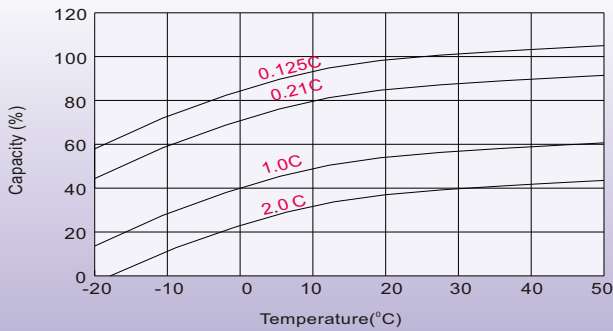
Discharge Characteristics



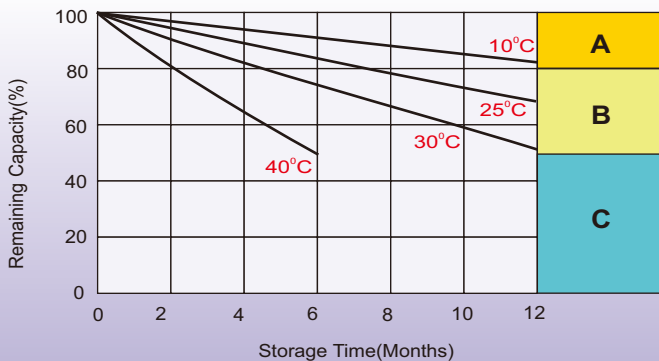
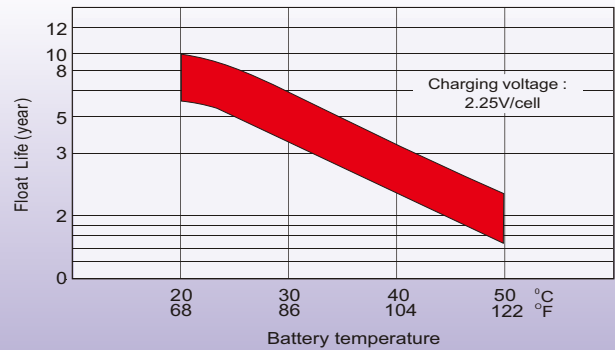
Float Charging Characteristics



Temperature Effects in Relation to Battery Capacity



Effect of Temperature on Long Term Float Life



Self Discharge Characteristics

- A** No supplementary charge required
(Carry out supplementary charge before use if 100% capacity is required.)
- B** Supplementary charge required before use. Optional charging way as below:
 1. Charged for above 3 days at limited current 0.25CA and constant voltage 2.25V/cell.
 2. Charged for above 20 hours at limited current 0.25CA and constant voltage 2.45V/cell.
 3. Charged for 8-10 hours at limited current 0.05CA.
- C** Supplementary charge may often fail to recover the capacity.
The battery should never be left standing till this is reached.

Sales Office

China sales office:

Add: 5th Floor, Xinbaohui Bldg., Nanhai Blvd.,
Nanshan, Shenzhen, China. 518052
Tel: +86-755-86036060 (100 lines)
Fax: +86-755-26067269
E-mail: export@leoch.com
Http://www.leoch.com

HongKong sales office:

Workshop C, 33/F, TML Tower,
No. 3 Hoi Shing Road, Tsuen Wan,
New Territories, Hong Kong
Tel: +852 35786666
Fax: +852 21170016
E-mail: sales.hk@leoch.com

Singapore sales office:

Add: No. 1 Tech Park Crescent,
Singapore 638131
Tel: +65 68636078
Fax: +65 68636079
Email sales.sg@leoch.com
Http://www.leoch.com

North America sales office:

Add: 19751 Descartes, Unit A,
Foothill Ranch, CA 92610, USA
Tel: 949-588-5853
Fax: 949-588-5966
E-mail: sales@leoch.us
Http://www.leoch.us

Europe sales office:

Add: 9B Wheatstone Court. Waterwells
Business Park, Gloucester, GL2-2AQ,
UK United Kingdom
Tel: +44(0) 1452 729428 / 1452 729696
Fax: +44 (0)1452-690125
E-mail: Sales.Europe@leoch.com