

LPS SERIES-Solar Power

LPS2-900 (2V920AH)

Specification

Nominal Voltage	2V	
Nominal Capacity(100HR)	920.0AH	
Dimension	Length	410±2mm (16.14 inches)
	Width	175±2mm (6.89 inches)
	Container Height	330±2mm (12.99 inches)
	Total Height (with Terminal)	350±2mm (13.78 inches)
Approx Weight	Approx 50.0 Kg (110.3 lbs)	
Terminal	T11	
Container Material	ABS	
Rated Capacity	920.0 AH/9.20A	(100hr, 1.80V/cell, 25°C/77°F)
	856.0 AH/42.8A	(20hr, 1.80V/cell, 25°C/77°F)
	800.0 AH/80.0A	(10hr, 1.80V/cell, 25°C/77°F)
	703.0 AH/140.6A	(5hr, 1.75V/cell, 25°C/77°F)
	470.0 AH/470.4A	(1hr, 1.60V/cell, 25°C/77°F)
Max. Discharge Current	6400A (5s)	
Internal Resistance	Approx 0.5mΩ	
Operating Temp. Range	Discharge	-15~50°C (5~122°F)
	Charge	0~40°C (32~104°F)
	Storage	-15~40°C (5~104°F)
Nominal Operating Temp. Range	25±3°C (77±5°F)	
Cycle Use	Initial Charging Current less than 240.0A. Voltage 2.4V~2.5V at 25°C(77°F)Temp. Coefficient -5mV/°C	
Standby Use	No limit on Initial Charging Current Voltage 2.25V~2.3V at 25°C(77°F)Temp. Coefficient -3mV/°C	
Capacity affected by Temperature	40°C (104°F)	103%
	25°C (77°F)	100%
	0°C (32°F)	86%
Self Discharge	Leoch LPS series batteries may be stored for up to 6 months at 25°C(77°F) and then a freshening charge is required. For higher temperatures the time interval will be shorter.	



Applications

- ◆ Green energy systems
- ◆ Communication systems

Leoch battery is green battery, focus on the Environmental protection and Ecological protection, which well connect human being and environment into harmony. Continuous power supply for people, and being benign cycle back to the green environment.



Constant Current Discharge (Amperes) at 25 °C (77° F)

F.V/Time	30min	45min	1h	2h	3h	4h	5h	8h	10h	20h	48h	100h
1.85V/cell	587.1	465.9	386.7	241.2	186.7	153.7	130.9	93.2	77.4	41.3	18.3	9.01
1.80V/cell	630.0	490.2	410.8	254.8	195.5	160.6	136.4	96.1	80.0	42.8	18.6	9.20
1.75V/cell	667.1	515.4	428.7	264.4	202.1	166.0	140.6	97.9	81.2	43.0	18.9	9.29
1.70V/cell	700.0	534.8	443.7	272.4	207.5	169.7	143.0	99.5	82.1	43.5	19.1	9.41
1.65V/cell	734.3	558.1	459.6	278.8	212.5	173.3	146.1	100.9	83.3	44.1	19.4	9.52
1.60V/cell	759.3	572.9	470.4	284.8	216.3	175.7	148.2	102.2	84.4	44.6	19.6	9.62

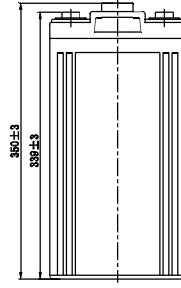
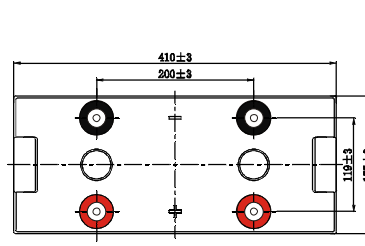
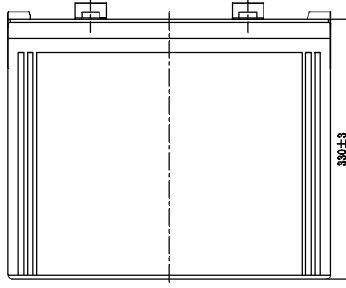
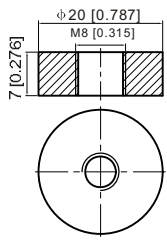
Constant Power Discharge (Watts) at 25 °C (77° F)

F.V/Time	30min	45min	1h	2h	3h	4h	5h	8h	10h	20h	48h	100h
1.85V/cell	1122.1	895.8	748.0	469.2	364.8	301.5	257.9	184.9	154.0	82.3	36.5	18.0
1.80V/cell	1194.3	936.3	790.3	493.2	380.2	313.9	267.5	190.2	158.9	85.1	37.0	18.4
1.75V/cell	1255.1	978.7	821.0	509.8	392.1	323.5	274.8	193.3	161.1	85.4	37.6	18.5
1.70V/cell	1305.8	1008.5	845.2	523.0	401.0	329.2	278.7	196.2	162.7	86.3	38.0	18.7
1.65V/cell	1359.6	1046.5	870.5	533.0	409.0	335.1	283.7	198.5	164.8	87.5	38.4	18.9
1.60V/cell	1391.8	1064.2	884.7	541.1	414.0	338.3	286.6	200.6	166.7	88.3	38.8	19.1

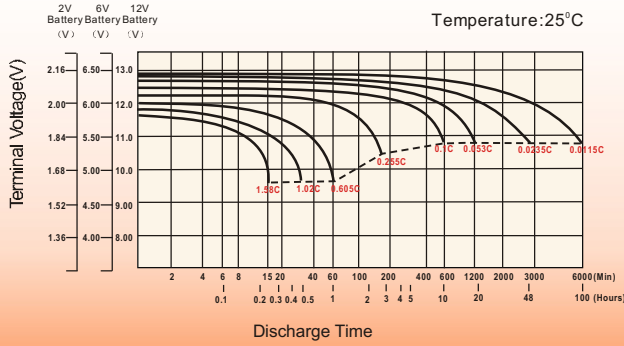
Dimensions

T11 Terminal

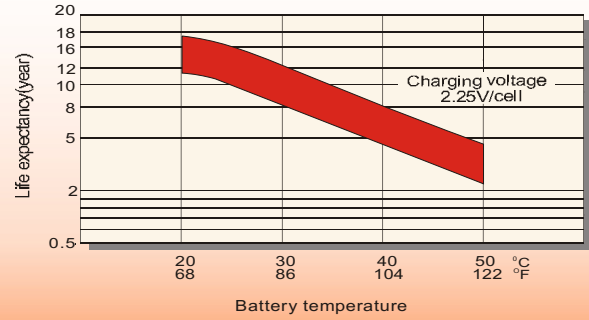
Unit: mm [inches]



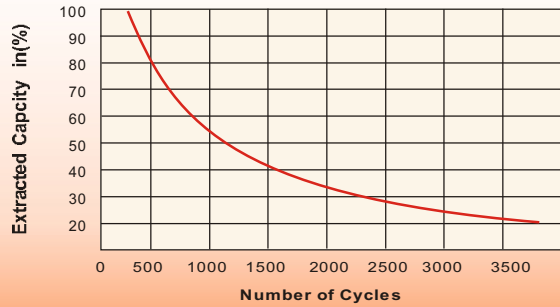
Discharge Characteristics



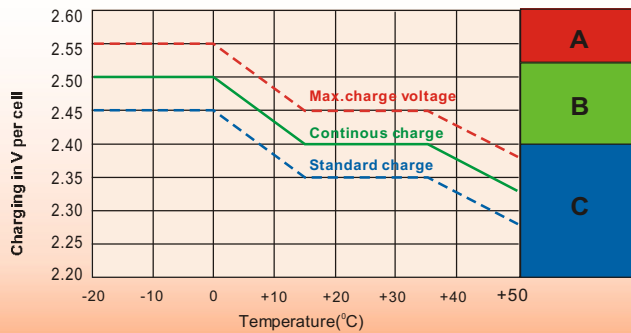
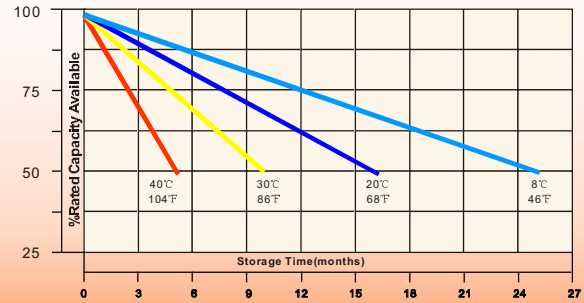
Effect of Temperature on Long Term Float Life



Cycle Service Life



Self-Discharge at Different Temperatures



Charge Mode

- A** With switch regulator (two-step controller) charge on curve max.charge voltage for max.2 hrs/day then switch over to continuous charge
- B** Standard charge without switching
- C** Boost charge (Equalizing charge with external generator) charge on curve continuous charge for max. 5 hrs/month, then switch over to curve Standard charge

Sales Office

China sales office:

Add: 5th Floor, Xinbaohui Bldg., Nanshai Blvd., Nanshan, Shenzhen, China. 518052
Tel: +86-755-86036060 (100 lines)
Fax: +86-755-26067269
E-mail: export@leoch.com
Http://www.leoch.com

HongKong sales office:

Add: Workshop C, 33/F, TML Tower, No. 3 Hoi Shing Road, Tsuen Wan, New Territories, Hong Kong
Tel: +852 35786666
Fax: +852 21170016
E-mail: sales.hk@leoch.com

Singapore sales office:

Add: No. 1 Tech Park Crescent, Singapore 638131
Tel: +65 68416629
Fax: +65 68443210
Email: sales.sg@Leoch.com

North America sales office:

Add: 19751 Descartes, Unit A, Foothill Ranch, CA 92610, USA
Tel: 949-588-5853
Fax: 949-588-5966
E-mail: sales@leoch.us
Http://www.leoch.com

Europe sales office:

Add: 9B Wheatstone Court, Waterwells Business Park, Gloucester, GL2-2AQ, UK United Kingdom
Tel: +44(0) 1452 729428 / 1452 729696
Fax: +44 (0)1452-690125
E-mail: Sales.Europe@leoch.com