



# LPS SERIES-Solar Power

## LPS12-75 (12V74.8AH)

### Specification

Nominal Voltage	12V	
Nominal Capacity(100HR)	74.8AH	
Dimension	Length	348±2mm (13.70 inches)
	Width	167±2mm (6.57 inches)
	Container Height	178±2mm (7.01 inches)
	Total Height (with Terminal)	178±2mm (7.01 inches)
Approx Weight	Approx 21.2 Kg (46.8lbs)	
Terminal	T6	
Container Material	ABS	
Rated Capacity	74.8 AH/0.748A	(100hr, 1.80V/cell, 25°C/77°F)
	68.2 AH/3.413A	(20hr, 1.80V/cell, 25°C/77°F)
	65.0 AH/6.50A	(10hr, 1.80V/cell, 25°C/77°F)
	56.7 AH/11.34A	(5hr, 1.75V/cell, 25°C/77°F)
	39.5 AH/39.5A	(1hr, 1.60V/cell, 25°C/77°F)
Max. Discharge Current	780A (5s)	
Internal Resistance	Approx 7.3mΩ	
Operating Temp. Range	Discharge : -15~50°C (5~122°F)	
	Charge : 0~40°C (32~104°F)	
	Storage : -15~40°C (5~104°F)	
Nominal Operating Temp. Range	25±3°C (77±5°F)	
Cycle Use	Initial Charging Current less than 19.5A. Voltage 14.4V~15.0V at 25°C(77°F)Temp. Coefficient -30mV/°C	
	Standby Use No limit on Initial Charging Current Voltage 13.5V~13.8V at 25°C(77°F)Temp. Coefficient -20mV/°C	
Capacity affected by Temperature	40°C (104°F)	103%
	25°C (77°F)	100%
	0°C (32°F)	86%
Self Discharge	Leoch LPS series batteries may be stored for up to 6 months at 25°C(77°F) and then a freshening charge is required. For higher temperatures the time interval will be shorter.	



### Applications

- ◆ Green energy systems (solar, wind, hydro, etc)
- ◆ Solar power stations
- ◆ Telecommunications installations
- ◆ Measurement stations
- ◆ Pump systems
- ◆ Signal station
- ◆ Survey and Mapping system
- ◆ Emergency lighting
- ◆ Railway crossing
- ◆ Traffic lights
- ◆ Street lightening
- ◆ Lawn lamp
- ◆ Street signs
- ◆ SOS pillars
- ◆ Alarm installations
- ◆ Weekend cottage camping
- ◆ Caravans
- ◆ Boats or buoys



### Constant Current Discharge (Amperes) at 25 °C (77 °F)

F.V/Time	15min	20min	30min	45min	1h	2h	3h	4h	5h	8h	10h	20h	48h	100h
1.85V/cell	73.9	61.4	47.7	37.8	30.6	19.9	15.0	12.3	10.4	7.27	6.23	3.31	1.49	0.732
1.80V/cell	82.0	67.6	51.5	40.1	32.2	21.2	15.9	12.9	10.9	7.63	6.50	3.41	1.51	0.748
1.75V/cell	90.9	74.0	55.4	42.9	34.8	22.2	16.7	13.5	11.3	7.86	6.64	3.48	1.54	0.755
1.70V/cell	99.3	80.8	60.8	44.8	36.7	23.4	17.6	14.1	11.8	8.15	6.85	3.55	1.56	0.764
1.65V/cell	105.2	85.3	64.1	47.6	38.0	24.2	18.2	14.5	12.2	8.36	7.00	3.64	1.58	0.776
1.60V/cell	115.3	92.6	68.1	49.3	39.5	25.2	18.8	15.0	12.6	8.59	7.16	3.72	1.61	0.783

### Constant Power Discharge (Watts/cell) at 25 °C (77 °F)

F.V/Time	15min	20min	30min	45min	1h	2h	3h	4h	5h	8h	10h	20h	48h	100h
1.85V/cell	138.7	116.4	91.4	73.0	59.5	38.9	29.4	24.2	20.5	14.4	12.4	6.59	2.98	1.47
1.80V/cell	151.7	126.2	97.1	76.6	62.2	41.1	30.9	25.2	21.4	15.1	12.9	6.78	3.02	1.49
1.75V/cell	166.2	136.9	103.6	81.5	66.7	42.9	32.5	26.3	22.2	15.5	13.2	6.92	3.06	1.50
1.70V/cell	179.1	148.4	113.2	84.8	70.3	45.1	34.0	27.3	23.0	16.1	13.6	7.05	3.09	1.52
1.65V/cell	188.9	156.0	118.8	89.6	72.4	46.5	35.2	28.2	23.8	16.5	13.9	7.21	3.14	1.54
1.60V/cell	202.9	166.9	124.9	92.0	74.6	48.1	36.1	29.0	24.5	16.9	14.1	7.37	3.19	1.55

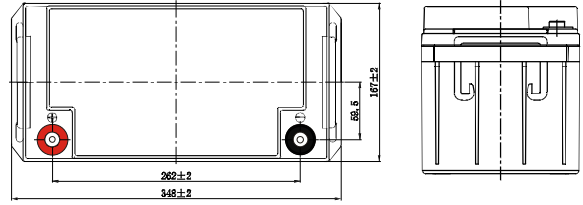
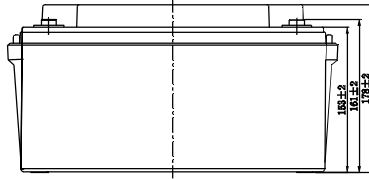
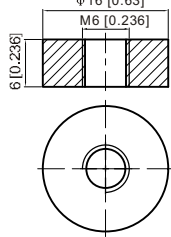
Specifications subject to change without notice.



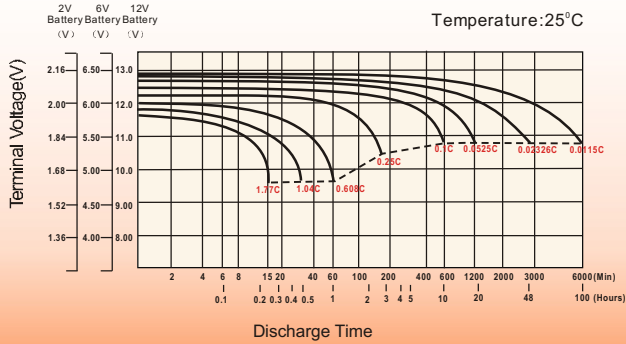
## Dimensions

### T6 Terminal

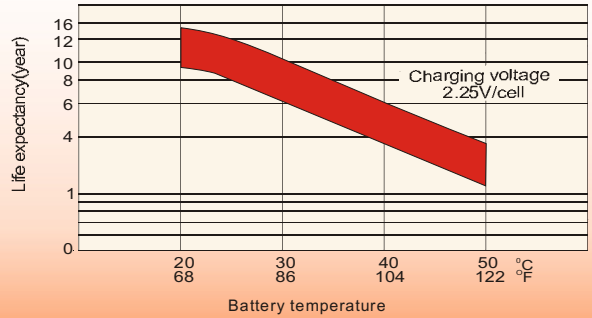
Unit: mm [inches]



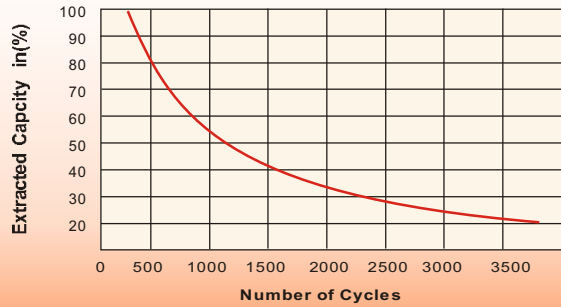
## Discharge Characteristics



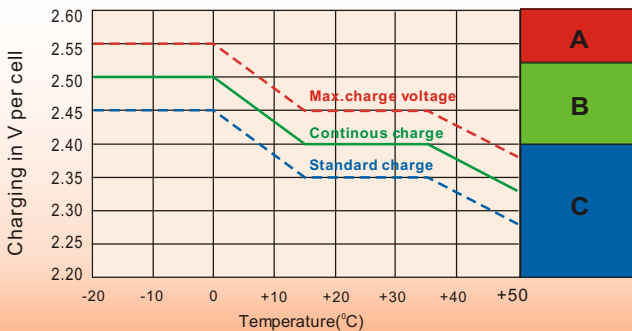
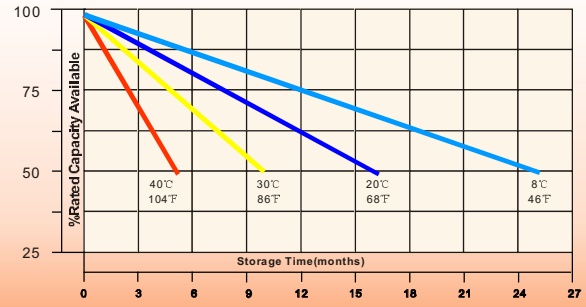
## Effect of Temperature on Long Term Float Life



## Cycle Service Life



## Self-Discharge at Different Temperatures



## Charge Mode

- A** With switch regulator (two-step controller) charge on curve max.charge voltage for max.2 hrs/day then switch over to continuous charge
- B** Standard charge without switching
- C** Boost charge (Equalizing charge with external generator) charge on curve continuous charge for max. 5 hrs/month, then switch over to curve Standard charge

## Sales Office

### China sales office:

Add: 5th Floor, Xinbaohui Bldg., Nanhai Blvd.,  
Nanshan, Shenzhen, China. 518052  
Tel: +86-755-86036060 (100 lines)  
Fax: +86-755-26067269  
E-mail: export@leoch.com  
Http://www.leoch.com

### HongKong sales office:

Add: Workshop C, 33/F, TML Tower,  
No. 3 Hoi Shing Road, Tsuen Wan,  
New Territories, Hong Kong  
Tel: +852 35786666  
Fax: +852 21170016  
E-mail: sales.hk@leoch.com

### Singapore sales office:

Add: No. 1 Tech Park Crescent,  
Singapore 638131  
Tel: +65 68416629  
Fax: +65 68443210  
Email: sales.sg@leoch.com

### North America sales office:

Add: 19751 Descartes, Unit A,  
Foothill Ranch, CA 92610, USA  
Tel: 949-588-5853  
Fax: 949-588-5966  
E-mail: sales@leoch.us  
Http://www.leoch.com

### Europe sales office:

Add: 9B Wheatstone Court, Waterwells  
Business Park, Gloucester, GL2-2AQ,  
UK United Kingdom  
Tel: +44(0) 1452 729428 / 1452 729696  
Fax: +44 (0)1452-690125  
E-mail: Sales.Europe@leoch.com