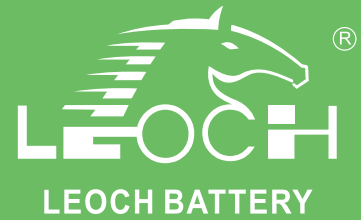




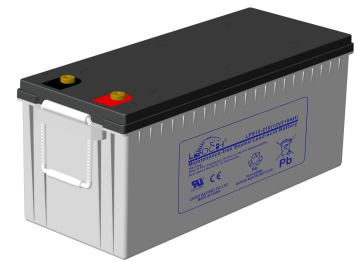
# LPS Series-Solar Power

## LPS12-210(12V210Ah)

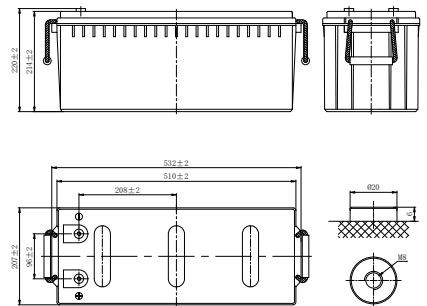


### Specifications

Rated Voltage	12V	
Nominal Capacity	207.0Ah	(C <sub>100</sub> , 1.80V/cell)
Dimension	Length	532±2mm (20.9 inches)
	Width	207±2mm (8.15 inches)
	Container Height	214±2mm (8.42 inches)
	Total Height	220±2mm (8.66 inches)
Approx Weight	54.0Kg (119.0 lbs)	
Terminal	M8	
Container Material	ABS	
Rated Capacity (25°C)	207.0Ah	(100hr, 2.07A, 1.80V/cell)
	189.0Ah	(20hr, 9.45A, 1.80V/cell)
	180.0Ah	(10hr, 18.0A, 1.80V/cell)
	160.0Ah	(5hr, 32.0A, 1.75V/cell)
	116.3Ah	(1hr, 116.3A, 1.60V/cell)
Max. Discharge Current	1800A (5s)	
Internal Resistance (25°C)	Approx 3.5mΩ	
Operating Temp. Range	Discharge	-20 ~ 55°C (-4 ~ 131°F)
	Charge	0 ~ 40°C (32 ~ 104°F)
	Storage	-15 ~ 50°C (5 ~ 122°F)
Nominal Operating Temp. Range	25±3°C (77±5°F)	
Cycle Use	Initial Charging Current less than 45.0A. Voltage 14.1V~14.4V at 25°C(77°F)Temp. Coefficient -30mV/°C	
Standby Use	Initial Charging Current less than 45.0A. Voltage 13.5V~13.8V at 25°C(77°F)Temp. Coefficient -20mV/°C	
Effect of temp. to Capacity	40°C (104°F)	103%
	25°C (77°F)	100%
	0°C (32°F)	86%
Self Discharge	LPS series batteries may be stored for up to 6 months at 25°C(77°F) and then a freshening charge is required. For higher temperatures the time interval will be shorter.	



### Layout



### Constant Current Discharge (Amperes) at 25 °C (77°F)

F.V/Time	1h	2h	3h	4h	5h	6h	8h	10h	20h	48h	72h	100h	120h
1.85V/cell	94.6	53.9	42.8	34.9	29.9	26.9	21.1	16.9	8.87	3.80	2.62	1.94	1.69
1.80V/cell	100.1	56.8	45.0	36.5	31.0	27.8	21.6	18.0	9.45	4.05	2.79	2.07	1.80
1.75V/cell	106.2	59.3	46.3	38.0	32.0	28.7	22.0	18.4	9.64	4.13	2.84	2.11	1.84
1.70V/cell	111.1	61.6	47.7	38.9	32.6	29.2	22.3	18.5	9.73	4.17	2.87	2.13	1.85
1.67V/cell	115.0	63.4	49.1	39.8	33.1	29.6	22.7	18.7	9.83	4.21	2.90	2.15	1.87
1.60V/cell	116.3	64.5	50.0	40.3	33.7	30.1	22.9	18.9	9.92	4.25	2.93	2.17	1.89

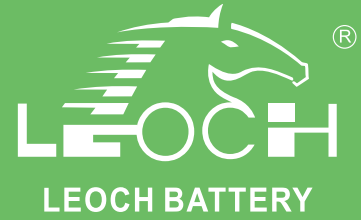
### Constant Power Discharge (Watts/cell) at 25 °C (77°F)

F.V/Time	1h	2h	3h	4h	5h	6h	8h	10h	20h	48h	72h	100h	120h
1.85V/cell	183.9	105.3	84.0	68.6	58.8	53.1	41.6	33.5	17.6	7.61	5.26	3.92	3.41
1.80V/cell	193.3	110.4	87.9	71.6	60.8	54.8	42.6	35.6	18.8	8.09	5.60	4.28	3.73
1.75V/cell	203.6	114.8	89.9	74.1	62.7	56.3	43.2	36.2	19.1	8.25	5.71	4.37	3.80
1.70V/cell	211.4	118.4	92.3	75.6	63.6	57.0	43.8	36.5	19.3	8.32	5.75	4.40	3.83
1.67V/cell	217.9	121.6	94.8	77.1	64.5	57.9	44.5	36.8	19.5	8.39	5.80	4.44	3.87
1.60V/cell	218.4	122.7	96.0	77.8	65.2	58.5	44.7	37.1	19.6	8.46	5.85	4.48	3.90



# LPS Series-Solar Power

## LPS12-210(12V210Ah)



### Applications

- Solar energy (wind energy) household system /communication / communication base station;
- Movable energy storage system;
- Solar traffic lights;
- Solar, wind and solar power generation;
- Emergency lighting system.

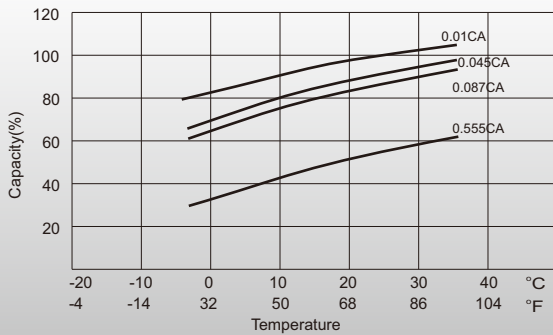
### General Features

- Adopted advantage AGM technology
- Operation temperature -20~55°C
- ≤3% Self discharge per month
- Fast recharge

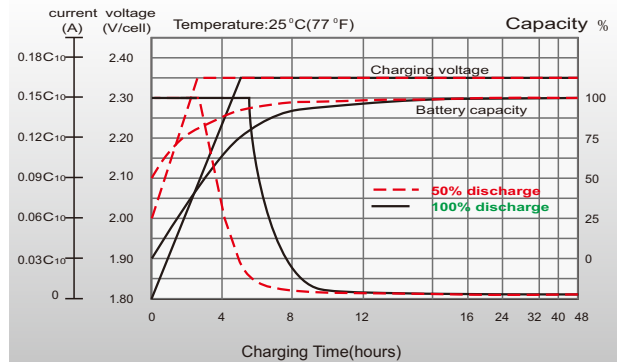
### Standards

- IEC 60896 Certified
- UL, CE Certified
- Classified as "Long Life" according to Eurobat
- Manufactured in Leoch® IATF16949, ISO 9001, ISO 14001 and OHSAS 18001 certified production facilities

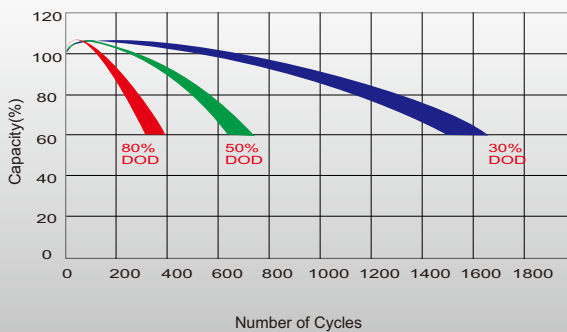
### Temperature Effects in Relation to Battery Capacity



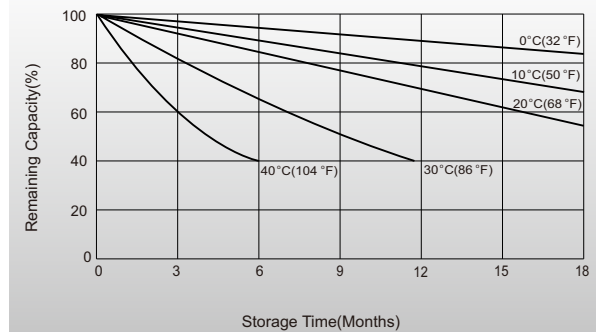
### Charging Characteristics



### Cycle Life in Relation to Depth of Discharge



### Self Discharge Characteristics



### Sales Offices Worldwide

#### China Sales Office

5th Floor, Xinbaohui Bldg., Nanhai Blvd.,  
Nanshan, Shenzhen, China. 518052  
Tel: +86-755-86036060 (100 lines)  
Fax: +86-755-26067269  
E-mail: export@leoch.com

#### HongKong Sales Office

Workshop C, 33/F, TML Tower, No. 3 Hoi Shing Road,  
Tsuen Wan, New Territories, Hong Kong  
Tel: +852 35786666  
Fax: +44 1452 690125  
E-mail: sales.hk@leoch.com

#### Singapore Sales Office

No. 1 Tech Park Crescent,  
Singapore 638131  
Tel: +65 68636078  
Fax: +65 6863 6079  
Email: sales.sg@Leoch.com

#### Australia Sales Office

2/29 Tarlington Place, Smithfield. NSW 2164  
Australia  
Tel: 02 9756 0950  
E-mail: sales.au@leoch.com

#### North America Sales Office

19751 Descartes  
Foothill Ranch, CA 92610, USA  
Tel: 949-588-5853  
Fax: 949-588-5966  
E-mail: sales@leoch.us  
Http://www.leoch.us

#### UK Sales Office

9B Wheatstone Court, Waterwells, Business Park,  
Gloucester, GL2-2AQ, UK United Kingdom  
Tel: +44(0) 1452 729428 / 1452 729696  
Fax: +44 1452 690125  
E-mail: Sales.Europe@leoch.com  
Http://www.leoch.eu

#### EMEA Sales Office

1 Deligiorgi St., 121 31 Athens,  
Greece  
Tel: +30 210 5760318 (2 lines)  
E-mail: support\_EMEA@leoch.com  
Http://www.leoch.eu

#### India Sales Office

Shed no. A-53(b), 2nd Stage of Peenya Industrial Area,  
Bangalore North Taluk, Bangalore-560058, India  
Tel: +91-80-23440018/23440019  
Fax: +91-80-23440017  
E-mail: indiasales@leoch.com



[Http://www.leoch.com](http://www.leoch.com)

© 2020 LEOCH. All rights reserved.

Trademarks and logos are the property of LEOCH and its affiliates unless otherwise noted.  
Subject to revisions without prior notice.

Publication No.: LB-LPS12-210-PD-EN-V1.0-202004