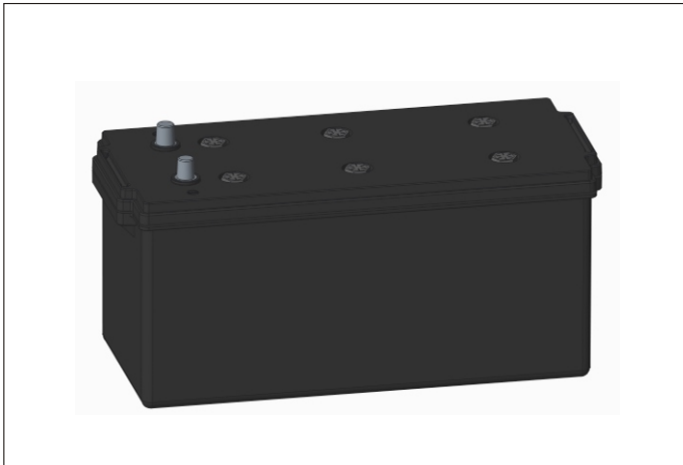




LPM12-180R-D [12V180Ah]



Dimensions (mm)

Technical drawings showing dimensions in mm:
 - Side view: Total height 218±3mm, container height 196±3mm.
 - Top view: Length 512±3mm, width 222±3mm.
 - Front view: Shows terminal layout.

Physical Specification (mm)

Nominal Voltage		12V
Nominal Capacity(20HR)		180Ah
Dimension	Length	512±3mm(20.16inches)
	Width	222±3mm(8.74inches)
	Container Height	196±3mm(7.72inches)
	Total Height(with Terminal)	218±3mm(8.58inches)
Weight		Approx 49.5Kg(109.15lbs)
Standard Terminal		1
Cell layout		3
Hold-Down		B0
Cell plate qty		/
Case		Black-PP Material
Cover		Black-PP Material
Handle		Black-PP Material

Electrical Specification

Rated Capacity	20 hour rate(9.0A)	180Ah
Reserve Capacity		380min
Cold Cranking Performance Amps@0°F(-18°C)		900A

Standard Terminal (mm)

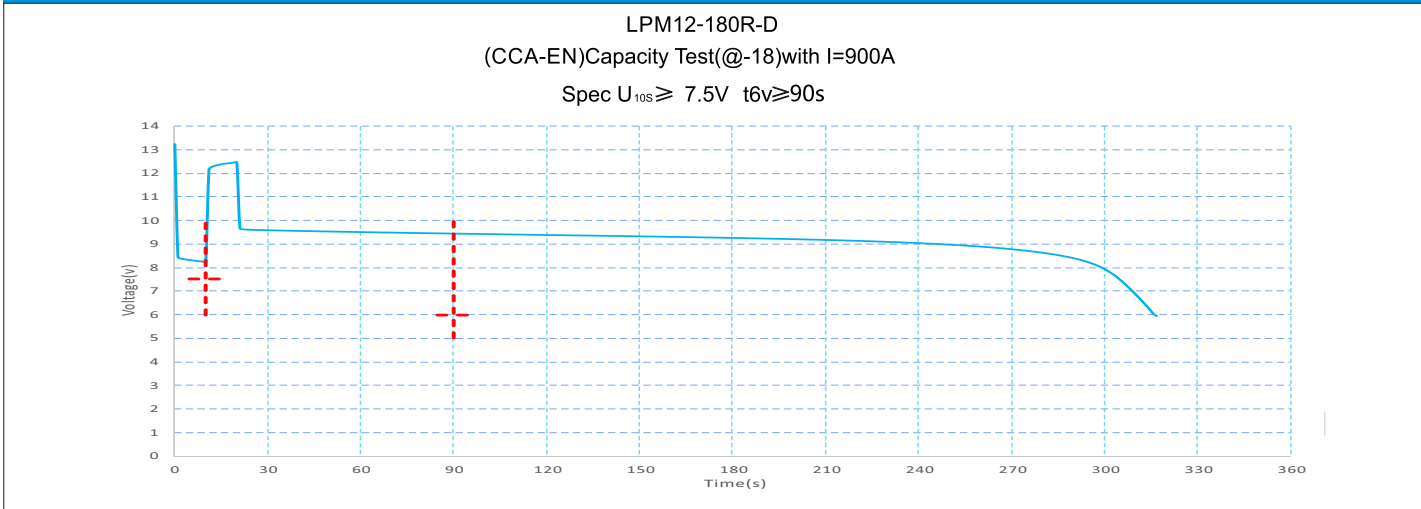
Terminal Type	D	
	Positive	Negative
1	19.5 ⁰ _{-0.3}	17.9 ⁰ _{-0.3}

Pos 2:1
 Neg 2:1

Cell Layout

Figure(3)

Discharge Characteristics(-18°C,0°F)



*Values are subject to variation of +/- 5% in normal manufacturing processes.
 *Technical specifications and the product line above could be changed without prior notice.