

LPL SERIES-Long Life Standby

LPL2-150 (2V150AH)

Specification

Nominal Voltage	2V	
Nominal Capacity(10HR)	150.0AH	
Dimension	Length	170±2mm (6.69 inches)
	Width	98±1mm (3.86 inches)
	Container Height	205±3mm (8.07 inches)
	Total Height (with Terminal)	212±3mm (8.35 inches)
	Approx Weight	Approx 8.5 Kg (18.7 lbs)
Terminal	T7	
Container Material	ABS	
Rated Capacity	160.0 AH/8.00A	(20hr, 1.80V/cell, 25°C/77°F)
	150.0 AH/15.0A	(10hr, 1.80V/cell, 25°C/77°F)
	133.0 AH/26.6A	(5hr, 1.75V/cell, 25°C/77°F)
	115.8 AH/38.6A	(3hr, 1.75V/cell, 25°C/77°F)
	90.1 AH/90.1A	(1hr, 1.60V/cell, 25°C/77°F)
Max. Discharge Current	1200A (5s)	
Internal Resistance	Approx 1.1mΩ	
Operating Temp. Range	Discharge : -15~50°C (5~122°F)	
	Charge : 0~40°C (32~104°F)	
	Storage : -15~40°C (5~104°F)	
Nominal Operating Temp. Range	25±3°C (77±5°F)	
Cycle Use	Initial Charging Current less than 45.0A. Voltage 2.4V~2.5V at 25°C(77°F)Temp. Coefficient -5mV/°C	
	Standby Use No limit on Initial Charging Current Voltage 2.25V~2.3V at 25°C(77°F)Temp. Coefficient -3mV/°C	
Capacity affected by Temperature	40°C (104°F)	103%
	25°C (77°F)	100%
	0°C (32°F)	86%
Self Discharge	Leoch LPL series batteries may be stored for up to 6 months at 25°C(77°F) and then a freshening charge is required. For higher temperatures the time interval will be shorter.	



Applications

- ◆ Tele-communication central station (wired or cellular)
- ◆ Power system communication, military communication, etc.
- ◆ Network communication including: data transmission, television signal transmission, etc.
- ◆ Uninterruptable Power System (UPS- for Telecom)
- ◆ EPS



Constant Current Discharge (Amperes) at 25 °C (77°F)

F.V/Time	15min	20min	30min	45min	1h	2h	3h	4h	5h	6h	8h	10h	20h
1.85V/cell	150.9	135.9	112.6	90.2	75.2	46.7	35.6	29.1	24.8	21.6	17.3	14.4	7.73
1.80V/cell	171.5	151.4	120.8	94.9	78.7	48.8	37.4	30.4	25.8	22.6	18.1	15.0	8.00
1.75V/cell	188.4	163.2	127.9	99.8	82.1	50.7	38.6	31.4	26.6	23.2	18.4	15.2	8.04
1.70V/cell	201.2	174.6	134.2	103.6	85.0	52.7	39.8	32.1	27.1	23.6	18.8	15.4	8.13
1.65V/cell	212.0	183.2	140.8	108.1	88.0	54.5	40.7	32.8	27.7	24.0	19.0	15.6	8.21
1.60V/cell	222.2	189.9	145.6	111.0	90.1	55.5	41.4	33.3	28.1	24.3	19.3	15.8	8.27

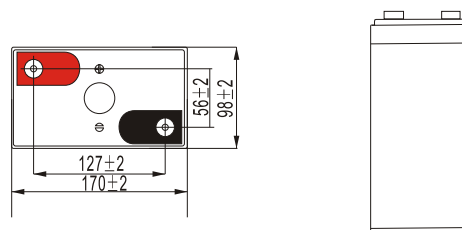
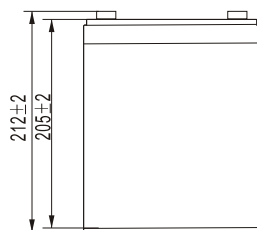
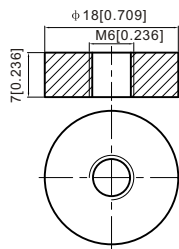
Constant Power Discharge (Watts) at 25 °C (77°F)

F.V/Time	15min	20min	30min	45min	1h	2h	3h	4h	5h	6h	8h	10h	20h
1.85V/cell	285.7	258.5	215.1	173.5	145.5	90.7	69.6	57.1	48.8	42.8	34.4	28.7	15.4
1.80V/cell	320.5	284.9	228.9	181.3	151.3	94.4	72.6	59.4	50.7	44.5	35.8	29.8	15.9
1.75V/cell	347.2	303.5	240.6	189.6	157.2	97.8	74.9	61.2	52.0	45.4	36.4	30.1	16.0
1.70V/cell	366.9	322.0	250.3	195.3	161.9	101.2	76.9	62.3	52.8	46.2	37.0	30.5	16.1
1.65V/cell	381.8	334.2	260.6	202.7	166.7	104.1	78.3	63.5	53.7	46.8	37.4	30.8	16.3
1.60V/cell	393.6	342.6	266.9	206.2	169.5	105.5	79.2	64.1	54.3	47.3	37.9	31.2	16.4

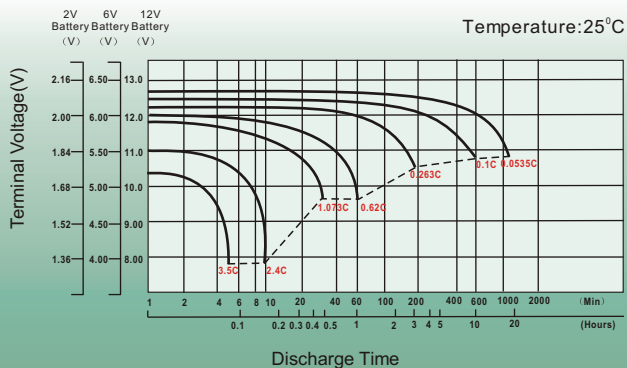
Dimensions

T7 Terminal

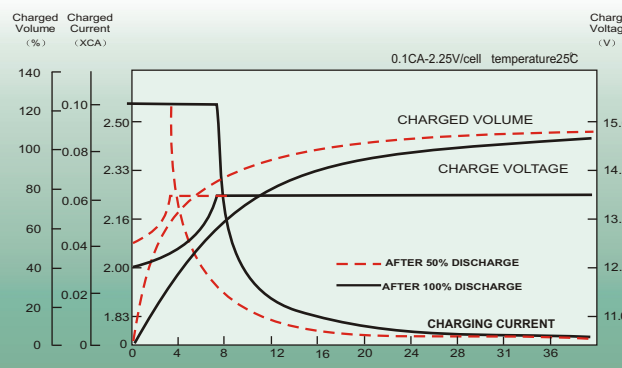
Unit: mm [inches]



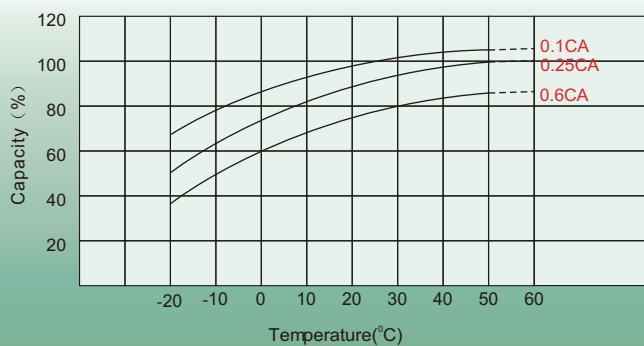
Discharge Characteristics



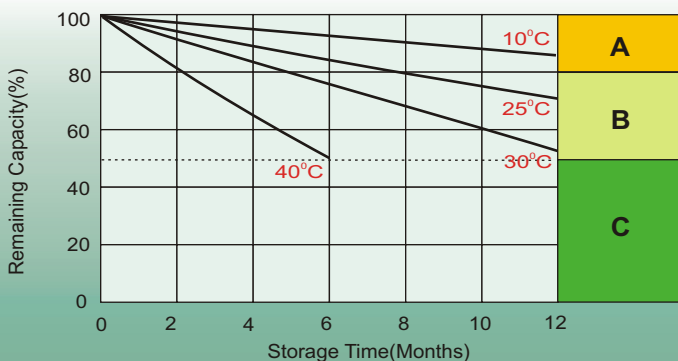
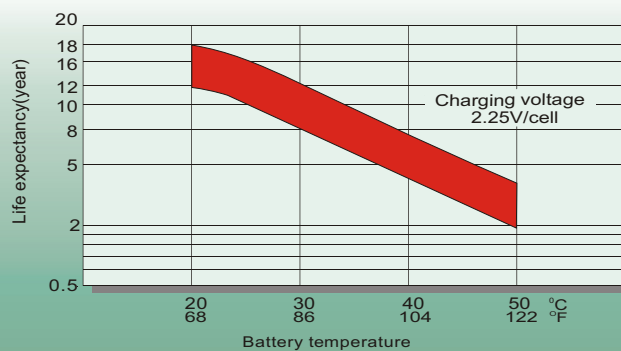
Float Charging Characteristics



Temperature Effects in Relation to Battery Capacity



Effect of Temperature on Long Term Float Life



Self Discharge Characteristics

- A** No supplementary charge required
(Carry out supplementary charge before use if 100% capacity is required.)
- B** Supplementary charge required before use. Optional charging way as below:
 1. Charged for above 3 days at limited current 0.25CA and constant volatge 2.25V/cell.
 2. Charged for above 20 hours at limited current 0.25CA and constant volatge 2.45V/cell.
 3. Charged for 8~10 hours at limited current 0.05CA .
- C** Supplementary charge may often fail to recover the capacity.
The battery should never be left standing till this is reached.

Sales Office

China sales office:

Add: 5th Floor, Xinbaohui Bldg., Nanhai Blvd.,
Nanshan, Shenzhen, China. 518052
Tel: +8 6-755-86036060 (100 lines)
Fax: +86-755-26067269
E-mail: export@leoch.com
Http://www.leoch.com

North America sales office:

Add: 19751 Descartes, Unit A,
Foothill Ranch, CA 92610, USA
Tel: 949-588-5853
Fax: 949-588-5966
E-mail: sales@leoch.us
Http://www.leoch.us

Europe sales office:

Add: 9B Wheatstone Park, Waterwells
Business Park, Gloucester, GL2 2AQ, UK.
Tel: +44(0) 01452 729428
Fax: +44 (0)1452-690125
E-mail: Sales.Europe@leoch.com

Singapore sales office:

Add: No.53, Ubi Avenue 1, #03-21 Paya
Ubi Industrial Park, Singapore 408934
Tel: + 65 6841 6629
E-mail: sales.sg@leoch.com

HongKong sales office:

Add: Unit 3910, 39/F, Cable TV Tower, No.9
Hoi Shing Road, Tsuen Wan, NT.H.K
Tel: +852 3578 6666
E-mail: sales.hk@leoch.com