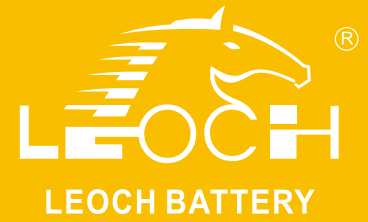




# LP Series-General Purpose

## LP6-8.5(6V8.5Ah)

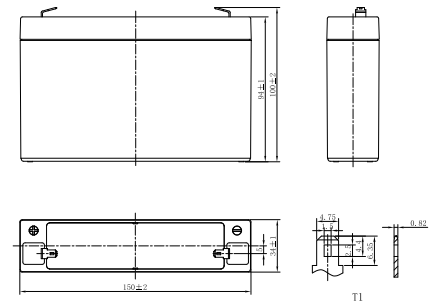


### Specifications

Rated Voltage	6V	
Nominal Capacity	8.5Ah	(C <sub>20</sub> , 1.75V/cell)
Dimension	Length	151±2mm (5.94 inches)
	Width	34±1mm (1.34 inches)
	Container Height	94±1mm (3.70 inches)
	Total Height	100±2mm (3.94 inches)
Approx Weight	1.20 Kg (2.65 lbs)	
Terminal	T1/T2	
Container Material	ABS	
Rated Capacity (25°C)	8.50 Ah	(20hr, 0.425A, 1.75V/cell)
	7.68 Ah	(10hr, 0.768A, 1.75V/cell)
	6.90 Ah	(5hr, 1.38A, 1.75V/cell)
	6.12 Ah	(3hr, 2.04A, 1.75V/cell)
	5.72 Ah	(1hr, 5.72A, 1.60V/cell)
Max. Discharge Current	128A (5s)	
Internal Resistance (25°C)	Approx 14mΩ	
Operating Temp. Range	Discharge	-15 ~ 50°C (5 ~ 122°F)
	Charge	-20 ~ 40°C (-4 ~ 104°F)
	Storage	-15 ~ 40°C (5 ~ 104°F)
Nominal Operating Temp. Range	25±3°C (77±5°F)	
Cycle Use	Initial Charging Current less than 2.55A. Voltage 7.2V~7.5V at 25°C(77°F)Temp. Coefficient -15mV/°C	
Standby Use	Initial Charging Current less than 2.55A. Voltage 6.75V~6.9V at 25°C(77°F)Temp. Coefficient -10mV/°C	
Effect of temp. to Capacity	40°C (104°F)	103%
	25°C (77°F)	100%
	0°C (32°F)	86%
Self Discharge	LP series batteries may be stored for up to 6 months at 25°C(77°F) and then a freshening charge is required. For higher temperatures the time interval will be shorter.	



### Layout

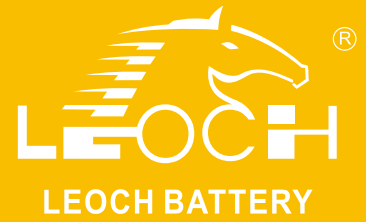


### Constant Current Discharge (Amperes) at 25 °C (77°F)

F.V/Time	5min	10min	15min	20min	30min	45min	1h	1.5h	2h	3h	4h	5h	6h	8h	10h	20h
1.85V/cell	29.4	19.4	14.9	11.9	8.79	6.39	5.17	3.70	2.84	1.98	1.57	1.34	1.15	0.904	0.750	0.415
1.80V/cell	31.6	20.6	15.7	12.4	9.06	6.56	5.30	3.78	2.89	2.01	1.60	1.36	1.17	0.917	0.761	0.420
1.75V/cell	33.3	21.4	16.2	12.8	9.30	6.70	5.41	3.85	2.95	2.04	1.62	1.38	1.18	0.927	0.768	0.425
1.70V/cell	34.9	22.2	16.7	13.1	9.54	6.85	5.51	3.92	2.99	2.07	1.64	1.40	1.19	0.937	0.776	0.428
1.67V/cell	36.1	22.9	17.1	13.4	9.70	6.96	5.59	3.97	3.02	2.09	1.66	1.41	1.20	0.944	0.781	0.432
1.60V/cell	38.3	23.8	17.7	13.8	10.0	7.14	5.72	4.05	3.08	2.13	1.69	1.43	1.22	0.957	0.791	0.436

### Constant Power Discharge (Watts/cell) at 25 °C (77°F)

F.V/Time	5min	10min	15min	20min	30min	45min	1h	1.5h	2h	3h	4h	5h	6h	8h	10h	20h
1.85V/cell	55.6	36.9	28.6	23.0	17.0	12.4	10.1	7.23	5.56	3.88	3.10	2.65	2.27	1.79	1.49	0.831
1.80V/cell	59.2	38.9	29.8	23.8	17.4	12.7	10.3	7.36	5.65	3.94	3.14	2.68	2.30	1.82	1.51	0.840
1.75V/cell	61.7	40.1	30.6	24.3	17.8	12.9	10.4	7.47	5.74	3.99	3.18	2.71	2.33	1.84	1.52	0.850
1.70V/cell	64.0	41.5	31.5	24.9	18.2	13.1	10.6	7.58	5.81	4.04	3.22	2.74	2.35	1.85	1.54	0.857
1.67V/cell	65.7	42.4	32.1	25.4	18.5	13.3	10.7	7.66	5.86	4.08	3.24	2.76	2.37	1.87	1.55	0.863
1.60V/cell	68.3	43.6	33.0	26.0	18.9	13.6	10.9	7.79	5.96	4.14	3.29	2.80	2.40	1.89	1.57	0.873



# LP Series-General Purpose LP6-8.5(6V8.5Ah)

## Applications

- All purpose
- Uninterruptable Power Supply (UPS)
- Electric Power System (EPS)
- Emergency backup power supply
- Alarm and security system
- Communication power supply
- DC power supply
- Auto control system

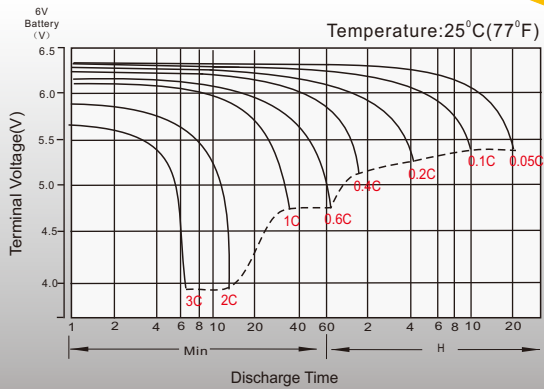
## General Features

- 5 years design life(25°C)
- Special exhaust structure and sealing technology, safe and reliable, flexible installation, convenient maintenance
- PbCaSn alloy for plate grids: less gassing, less self-discharging
- High quality AGM separator: extend cycle life and prevent micro short circuit
- High purity raw material: ensure low self discharge rate

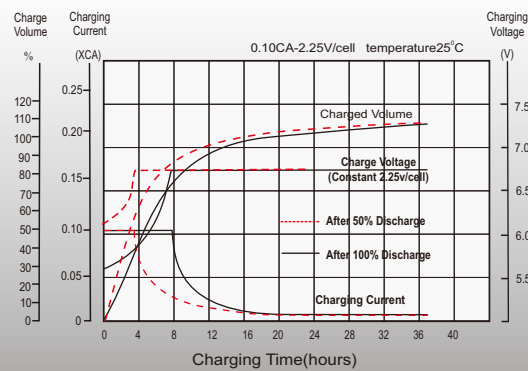
## Standards

- Compliance with IEC 60896 standards, EU Battery Directive
- UL, CE Certified
- Manufactured in Leoch®IATF 16949, ISO45001, ISO 9001 and ISO 14001 certified production facilities

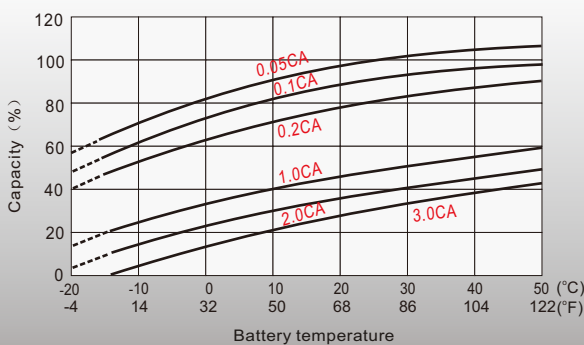
## Discharge Characteristics



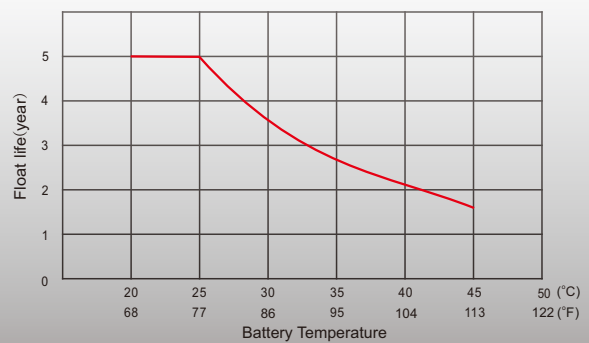
## Float Charging Characteristics



## Temperature Effects in Relation to Battery Capacity



## Float Service Life



## Sales Offices Worldwide

### China Sales Office

5th Floor, Xinbaohui Bldg., Nanhai Blvd.,  
Nanshan, Shenzhen, China. 518052  
Tel: +86-755-86036060 (100 lines)  
Tel: 949-588-5853  
Fax: +86-755-26067269  
E-mail: export@leoch.com

### HongKong Sales Office

Workshop C, 33/F, TML Tower, No. 3 Hoi Shing Road,  
Tsuen Wan, New Territories, Hong Kong  
Tel: +852 35786666  
Tel: +44(0) 1452 729428 / 1452 729696  
Fax: +44 1452 690125  
E-mail: sales.hk@leoch.com

### Singapore Sales Office

No. 1 Tech Park Crescent,  
Singapore 638131  
Tel: +65 68636078  
Tel: +30 210 5760318 (2 lines)  
Fax: +65 6863 6079  
Email: sales.sg@Leoch.com

### Australia Sales Office

2 /29 Tarlington Place, Smithfield, NSW 2164  
Australia  
Tel: 02 9756 0950  
E-mail: sales.au@leoch.com

### North America Sales Office

19751 Descartes  
Foothill Ranch, CA 92610, USA  
Tel: 949-588-5853  
Tel: 949-588-5966  
E-mail: sales@leoch.us  
Http:// www.leoch.us

### UK Sales Office

9B Wheatstone Court, Waterwells, Business Park,  
Gloucester, GL2-2AQ, UK United Kingdom  
Tel: +44(0) 1452 729428 / 1452 729696  
Tel: +44 1452 690125  
E-mail: Sales.Europe@leoch.com  
Http:// www.leoch.eu

### EMEA Sales Office

1 Deligiorgi St., 121 31 Athens,  
Greece  
Tel: +30 210 5760318 (2 lines)  
Tel: support\_EMEA@leoch.com  
Http:// www.leoch.eu

### India Sales Office

Shed no.A-53(b), 2nd Stage of Peenya Industrial Area,  
Bangalore North Taluk, Bangalore-560058, India  
Tel: +91-80-23440018/23440019  
Tel: +91-80-23440017  
E-mail: indiasales@leoch.com



[Http://www.leoch.com](http://www.leoch.com)

© 2020 LEOCH. All rights reserved.

Trademarks and logos are the property of LEOCH and its affiliates unless otherwise noted.  
Subject to revisions without prior notice.

Publication No.: LB-LP6-8.5-PD-EN-V2.0-202004