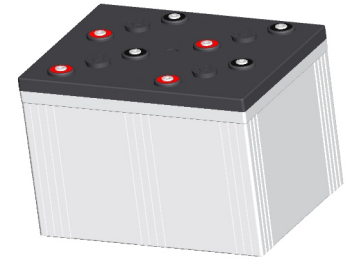


### Specification

Nominal Voltage	2V	
Nominal Capacity(10HR)	2500.0AH	
Dimensions	Length	490±3mm (19.29 inches)
	Width	350±3mm (13.78 inches)
	Container Height	339±3mm (13.35 inches)
	Total Height (with Terminal)	349±3mm (13.74 inches)
Approx Weight	Approx 132.0Kg (291.1 lbs)	
Terminal	T11	
Container Material	ABS	
Rated Capacity	2626.0 AH/131.3A	(20hr, 1.80V/cell, 25°C/77°F)
	2500.0 AH/250.0A	(10hr, 1.80V/cell, 25°C/77°F)
	2175.0 AH/435.0A	(5hr, 1.75V/cell, 25°C/77°F)
	1890.0 AH/630.0A	(3hr, 1.75V/cell, 25°C/77°F)
	1517.5 AH/1517.5A	(1hr, 1.60V/cell, 25°C/77°F)
Max. Discharge Current	20000A (5s)	
Internal Resistance	Approx 0.25mΩ	
Operating Temp. Range	Discharge	-15~50°C (5~122°F)
	Charge	0~40°C (32~104°F)
	Storage	-15~40°C (5~104°F)
Nominal Operating Temp. Range	25±3°C (77±5°F)	
Cycle Use	Initial Charging Current less than 750.0A. Voltage	
	2.4V~2.5V at 25°C(77°F)Temp. Coefficient -5mV/°C	
Standby Use	No limit on Initial Charging Current Voltage	
	2.25V~2.3V at 25°C(77°F)Temp. Coefficient -3mV/°C	
Capacity affected by Temperature	40°C (104°F)	103%
	25°C (77°F)	100%
	0°C (32°F)	86%
Self Discharge	Leoch LP series batteries may be stored for up to 6 months at 25°C(77°F) and then a freshening charge is required. For higher temperatures the time interval will be shorter.	



### Applications

- ◆ Tele-communication central station (wired or cellular)
- ◆ Power system communication, military communication, etc.
- ◆ Network communication including: data transmission, television signal transmission, etc.
- ◆ Uninterruptable Power System (UPS- for Telecom)



### Constant Current Discharge (Amperes) at 25 °C (77°F)

F.V/Time	30min	45min	1h	2h	3h	4h	5h	6h	8h	10h	20h
1.85V/cell	1917.0	1520.0	1247.5	749.3	579.2	475.6	405.0	353.8	285.0	238.8	126.7
1.80V/cell	/	1599.2	1325.0	790.6	607.5	496.9	422.0	369.6	295.9	250.0	131.3
1.75V/cell	/	1681.5	1382.5	823.3	630.0	513.8	435.0	378.3	301.6	252.5	132.6
1.70V/cell	/	1744.8	1430.9	847.5	646.7	525.0	442.5	385.0	306.3	255.0	133.9
1.65V/cell	/	1820.8	1482.5	873.0	660.8	536.3	452.0	391.7	310.6	258.3	135.6
1.60V/cell	/	1870.0	1517.5	893.8	675.0	543.8	458.5	397.1	314.7	261.3	137.2

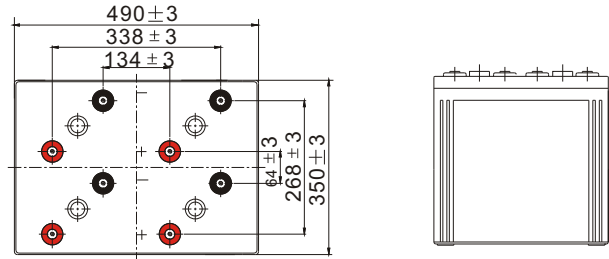
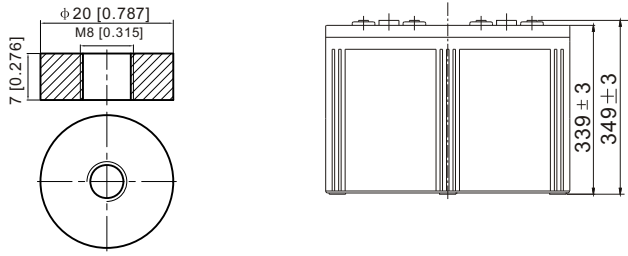
### Constant Power Discharge (Watts) at 25 °C (77°F)

F.V/Time	30min	45min	1h	2h	3h	4h	5h	6h	8h	10h	20h
1.85V/cell	3663.5	2922.5	2413.0	1457.5	1131.9	932.8	797.9	699.0	565.6	474.9	252.2
1.80V/cell	/	3054.4	2548.6	1530.3	1181.6	971.2	827.7	727.3	585.5	496.5	260.9
1.75V/cell	/	3192.8	2647.5	1587.4	1222.2	1000.8	850.3	742.3	595.3	500.8	263.2
1.70V/cell	/	3290.1	2725.8	1627.3	1249.8	1018.5	862.4	754.2	603.9	505.5	265.7
1.65V/cell	/	3414.1	2808.0	1669.1	1271.6	1036.8	877.8	764.9	611.0	511.1	268.7
1.60V/cell	/	3473.5	2854.4	1698.1	1292.1	1046.7	886.9	773.1	617.7	516.2	271.4

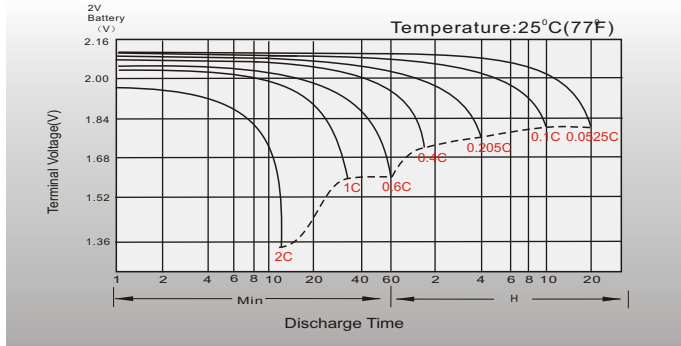
# Dimensions

## T11 Terminal

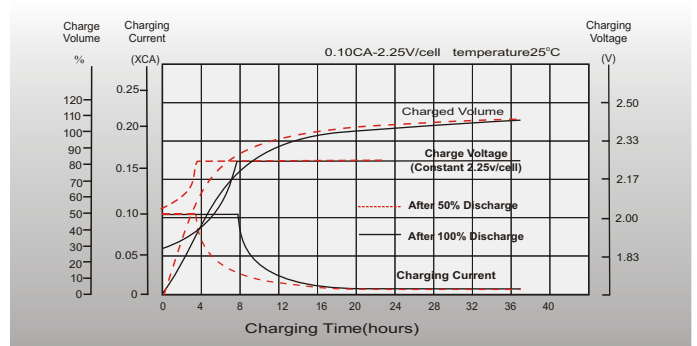
Unit: mm [inches]



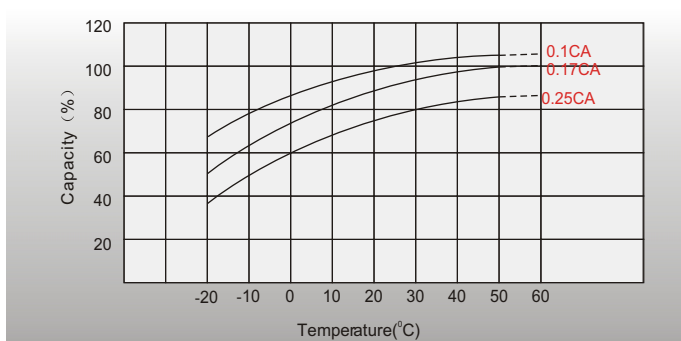
## Discharge Characteristics



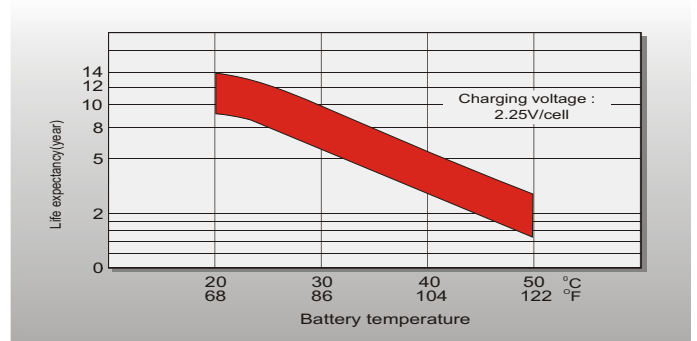
## Float Charging Characteristics



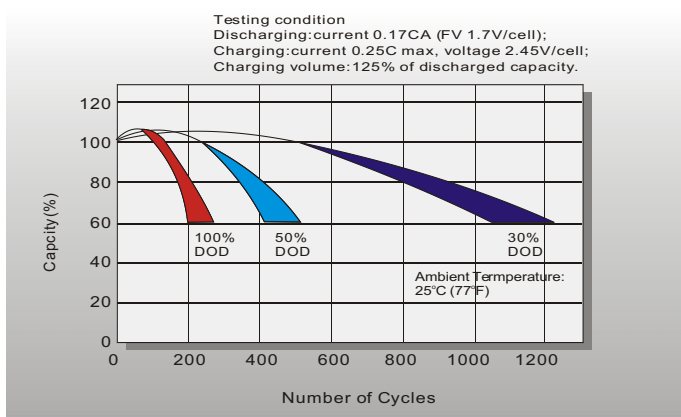
## Temperature Effects in Relation to Battery Capacity



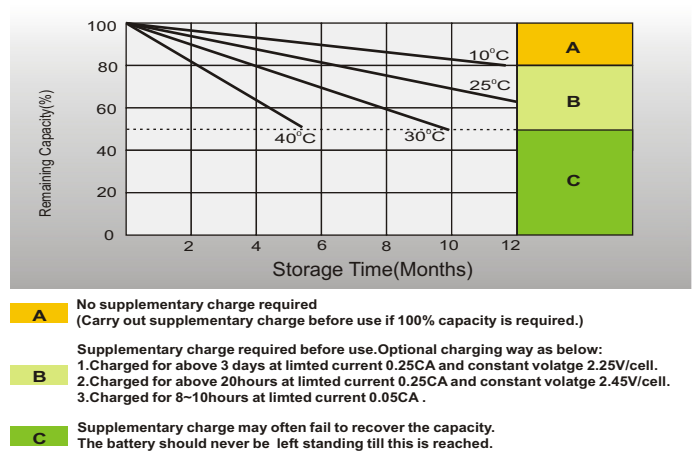
## Effect of Temperature on Long Term Float Life



## Cycle Life in Relation to Depth of Discharge



## Self Discharge Characteristics



## Sales Office

### China sales office:

Add: 5th Floor, Xinbaohui Bldg., Nanhai Blvd., Nanshan, Shenzhen, China. 518052  
Tel: +86-755-86036060 (100 lines)  
Fax: +86-755-26067269  
E-mail: export@leoch.com  
Http://www.leoch.com

### North America sales office:

Add: 19751 Descartes, Unit A, Foothill Ranch, CA 92610, USA  
Tel: 949-588-5853  
Fax: 949-588-5966  
E-mail: sales@leoch.us  
Http://www.leoch.us

### Europe sales office:

Add: 9B Wheatstone Park, Waterwells Business Park, Gloucester, GL2 2AQ, UK.  
Tel: +44(0) 01452 729428  
Fax: +44 (0)1452-690125  
E-mail: Sales.Europe@leoch.com

### Singapore sales office:

Add: No. 53, Ubi Avenue 1, #03-21 Paya Ubi Industrial Park, Singapore 408934  
Tel: + 65 6841 6629  
E-mail: sales.sg@leoch.com

### HongKong sales office:

Add: Unit 3910, 39/F, Cable TV Tower, No. 9 Hoi Shing Road, Tsuen Wan, NT, H.K.  
Tel: +852 3578 6666  
E-mail: sales.hk@leoch.com