



AGM CONCEPT GOLF CART BATTERY

Model: DTA6245(6V245Ah)

Specification

Nominal Voltage		6V
Rated Capacity (25°C)	20 Hour Rate (12.3A to 5.25Volts)	245 Ah
	10 Hour Rate (22.1A to 5.25Volts)	221 Ah
	5 Hour Rate (39.6A to 5.1 Volts)	198 Ah
Reserve Capacity	@25A	460 Minutes
	@75A	125 Minutes
Dimensions	Length	243 mm (9.57 inches)
	Width	187.5mm (7.38 inches)
	Height	275 mm (10.8 inches)
	Total Height	275 mm (10.8 inches)
Weight		31.8 kg (70.1 lbs)



Characteristics

Capacity Affected by Temperature (20 HR)			Self Discharge @ 25°C(77°F)	Max. Discharge Current @ 25°C(77°F)	Charging @ 25°C(77°F) (Constant Voltage)		Internal Resistance @ 25°C(77°F)	Container material
0°C (32°F)	25°C (77°F)	40°C (104°F)			Cycle	Float		
85%	100%	102%	<3% of capacity per month	2000A(5S)	7.20~7.35V	6.8~6.9V	1.7m Ω	ABS

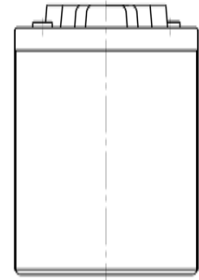
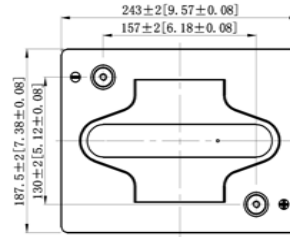
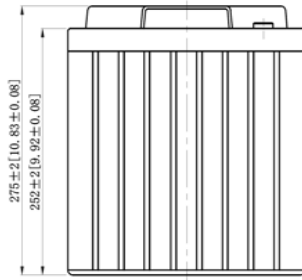
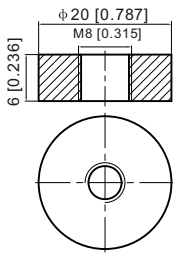
Typical Applications

- Golf cart
- Electric vehicle
- Solar
- Wheelchair
- Electric sightseeing car
- Electric scooter
- Electric forklift
- Scraper
- Marine
- Portable Medical device

Battery Structure and Size

T11 Terminal

Unit: mm [inches]

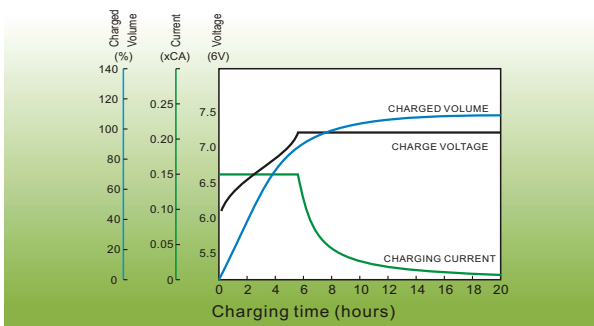


Key Features & Benefits

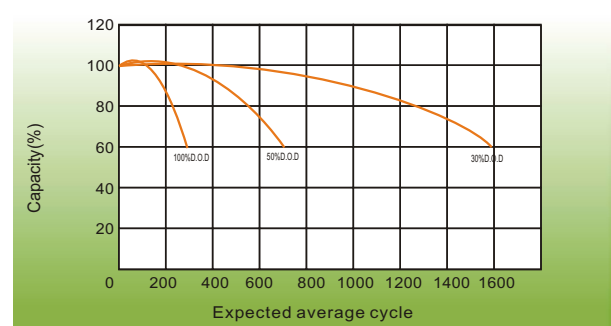
- Maintenance-free sealed construction, spill proof — safe and reliable.
- Strength-enhanced ABS container and compressed plate groups — better vibration and impact resistant.
- Special Lead-Calcium grid design — better corrosion resistant, deep discharge performance, higher capacity and longer cycle life.
- High porosity AGM separator — high oxygen recombination rate to ensure minimum gassing.
- Brass insert terminals — superior conductivity and high rate discharge performance.
- Low internal resistance — high charge acceptance and quick recharge.
- Low self discharge — longer shelf life than conventional batteries.

Performance Characteristics

Constant voltage charging characteristic (0.15CA, 25°C, 77°F)



Cycle life in relation to depth of discharge



LEOCH INTERNATIONAL TECHNOLOGY LIMITED

Factory: Jiangsu • Zhaoqing • Anhui • Shenzhen • Dongguan

China sales office:

Add: 5th Floor, Xinbaohui Bldg.,
Nanhai Blvd., Nanshan,

Shenzhen, China. 518052

Tel: +86-755-86036060 (100 lines)

Fax: +86-755-26067269

E-mail: export@leoch.com

North America sales office:

Add: 19751 Descartes, Unit A,

Foothill Ranch, CA 92610, USA

Tel: 949-588-5853

Fax: 949-588-5966

E-mail: sales@leoch.us

Europe sales office:

Add: 9B Wheatstone Court.

Waterwells Business Park,

Gloucester, G12-2aq, UK

Tel: +44(0) 1452 729696 1452 729428

Fax: +44(0) 1452 690125

E-mail: sales.Europe@leoch.com