



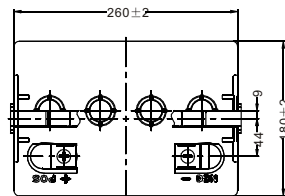
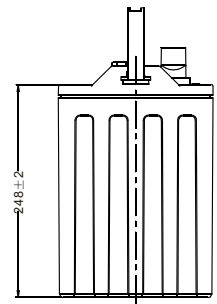
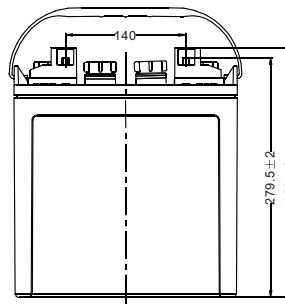
理士电池  
LEOCH BATTERY

## GOLF CART BATTERY

# DT866(8V150AH)

### Physical Specification

|                        |                                     |
|------------------------|-------------------------------------|
| Nominal Voltage        | 8V                                  |
| Nominal Capacity(20HR) | 150Ah                               |
| Nominal Capacity(5HR)  | 125Ah                               |
| Length                 | 260±2mm(10.24inches)                |
| Width                  | 180±2mm(7.09inches)                 |
| Container Height       | 248±2mm(9.76inches)                 |
| Total Height           | 279.5±2mm(11.00inches)              |
| Dry Weight             | Approx 18.8Kg(41.5lbs)              |
| Wet Weight             | Approx 25.9Kg(57.1lbs)              |
| Acid                   | 1.280±0.015g/cm <sup>3</sup> (25°C) |
| Standard Terminal      | DT-M8(A)                            |
| Container Material     | PP                                  |

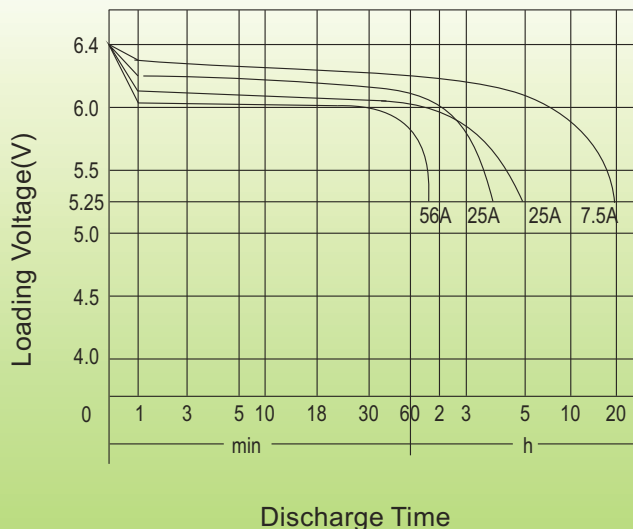


| Terminal   |          |
|------------|----------|
| D Positive | 19.5±0.2 |
| Negative   | 17.9±0.2 |

### Electrical Specification

|                  |                    |        |
|------------------|--------------------|--------|
| Rated Capacity   | 20 hour rate(7.5A) | 150Ah  |
|                  | 5 hour rate(25A)   | 125Ah  |
| Reserve Capacity | 25Amps             | 225min |
|                  | 56Amps             | 90min  |

### Discharge Characteristics(25°C , 77°F)



### Charge Method

#### Initial Charge:

- ①0.1C<sub>20</sub>(A) charging 15h
- ②0.05C<sub>20</sub>(A) charging 10h

The temperature of the battery should be below 50°C during charging.

#### Supplement Charge:

a)Charging at a constant voltage of 9.8~10V/cell and a limited current 0.25C<sub>20</sub> (A) until the electrolyte density up to 1.280g/cm<sup>3</sup> (30°C) and the current not change for 3 hours.

b)Charge with constant current 0.1C<sub>20</sub> (A) until the voltage between 10.4~11.2V/cell, and voltage maintains for 3 hours and not change.

Two method optional